

APP CRS <b>189°</b>	Rwy Idg TDZE Apt Elev	<b>5501</b> <b>1016</b> <b>1016</b>
------------------------	-----------------------------	---

# RNAV (GPS) RWY 19

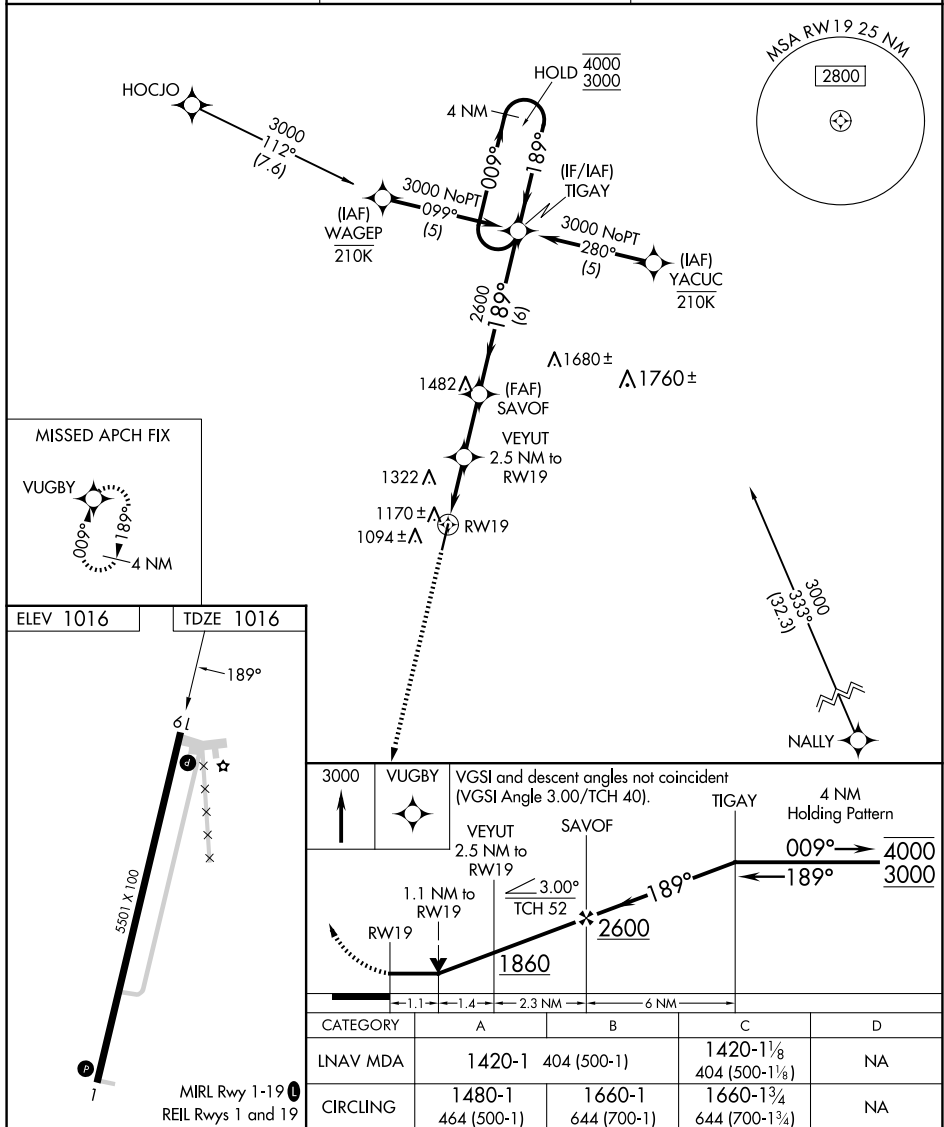
## ALLEN COUNTY (K88)

RNP APCH - GPS.

**T** Rwy 19 helicopter visibility reduction below  $\frac{3}{4}$  SM NA. When local altimeter setting not received, use Chanute altimeter setting: increase all MDAs 40 feet and LNAV visibility Cat C  $\frac{1}{4}$  SM and Circling visibility Cat C  $\frac{1}{4}$  SM. VDP NA when using Chanute altimeter setting.

MISSED APPROACH: Climb to 3000  
direct VUGBY and hold.

AWOS-3PT <b>128.325</b>	KANSAS CITY CENTER <b>127.725 270.25</b>	UNICOM <b>122.8 (CTAF) 0</b>
----------------------------	---	---------------------------------



CATEGORY	A	B	C	D
LNAV MDA	1420-1	404 (500-1)	1420-1 $\frac{1}{8}$ 404 (500-1 $\frac{1}{8}$ )	NA
CIRCLING	1480-1 464 (500-1)	1660-1 644 (700-1)	1660-1 $\frac{3}{4}$ 644 (700-1 $\frac{3}{4}$ )	NA