

WAAS CH 86628 W01A	APP CRS 009°	Rwy Idg TDZE 1014 Apt Elev 1016
--	------------------------	---

RNAV (GPS) RWY 1

ALLEN COUNTY (K88)

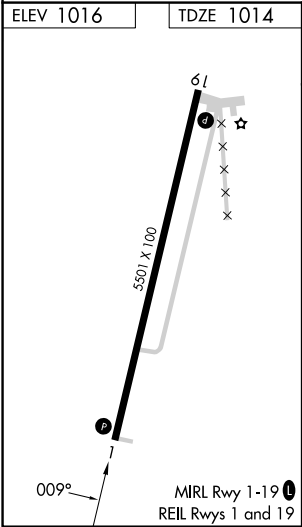
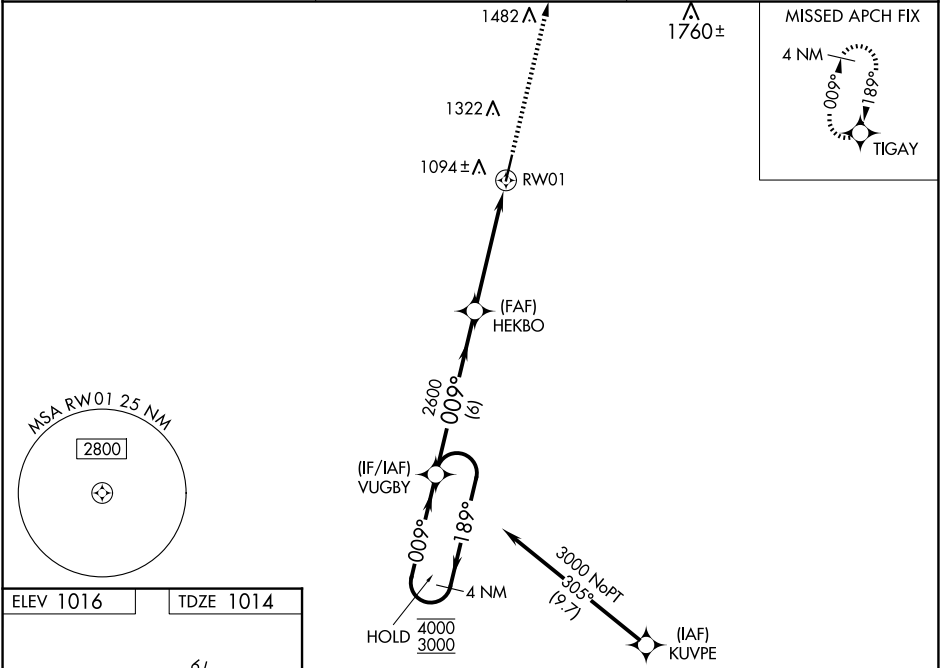
RNP APCH - GPS.

▼

Baro-VNAV and VDP NA when using Chanute altimeter setting. For uncompensated Baro-VNAV systems, LNAV/VNAV NA below -17°C or above 54°C. Rwy 1 helicopter visibility reduction below ¾ SM NA. When local altimeter setting not received, use Chanute altimeter setting: increase LPV DA to 1299 feet; increase LNAV/VNAV DA to 1324 feet; increase all MDAS 40 feet and visibility Circling Cat C ¼ SM.

MISSED APPROACH: Climb to 3000 direct TIGAY and hold.

AWOS-3PT 128.325	KANSAS CITY CENTER 127.725 270.25	UNICOM 122.8 (CTAF) 0
----------------------------	---	---------------------------------



4 NM Holding Pattern				3000	TIGAY
VUGBY				HEKBO	
4000 ← 189°				2600	1.3 NM to RWY 1
3000 → 009°				2600	RWY 1
GP 3.00° TCH 55				6 NM	3.5 NM
CATEGORY	A	B	C	D	
LPV DA	1264-1	250 (300-1)		NA	
LNAV/VNAV DA	1289-1	275 (300-1)		NA	
LNAV MDA	1480-1	466 (500-1)	1480-1 3/8 466 (500-1 3/8)	NA	
CIRCLING	1480-1 464 (500-1)	1660-1 644 (700-1)	1660-1 3/4 644 (700-1 3/4)	NA	