

WAAS CH <b>77637</b> <b>W15A</b>	APP CRS <b>146°</b>	Rwy Idg <b>3999</b> TDZE <b>984</b> Apt Elev <b>984</b>
--	------------------------	---

RNAV (GPS) RWY 15

BRENNER FLD (FNB)

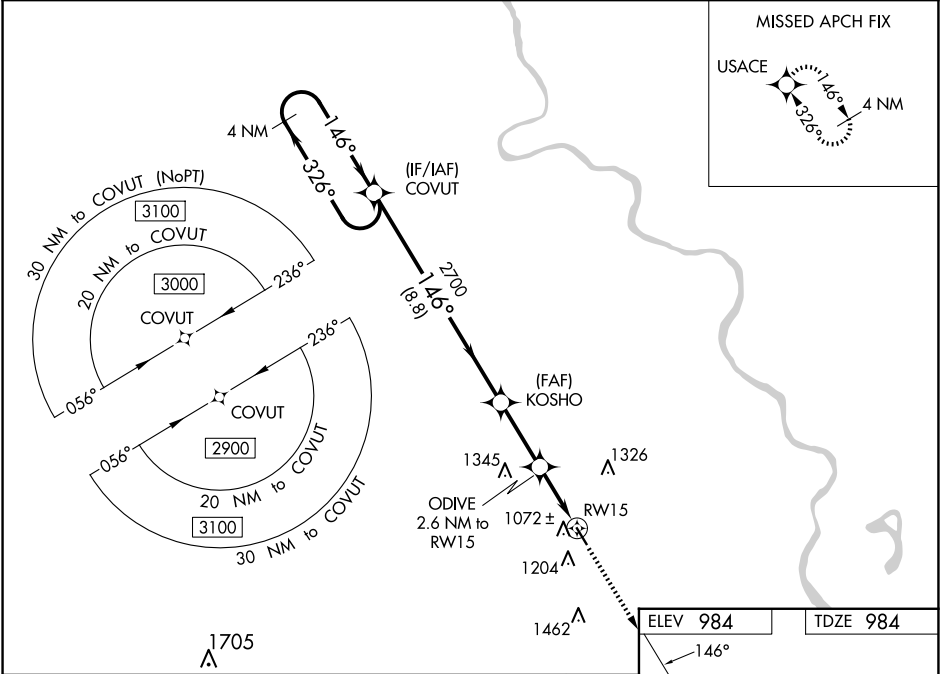
⚠

NA

For uncompensated Baro-VNAV systems, LNAV/VNAV NA below -21°C (-5°F) or above 54°C (130°F). DME/DME RNP-0.3 NA. When local altimeter setting not received, use Nebraska City altimeter setting and increase all DA 104 feet and increase all MDA 120 feet. VDP NA when using Nebraska City altimeter setting. Helicopter visibility reduction below ¾ SM NA. Baro-VNAV NA when using Nebraska City altimeter setting.

MISSED APPROACH: Climb to 3000 direct USACE and hold.

ASOS <b>119.275</b>	ST JOSEPH APP CON ★ <b>120.35 360.8</b>	UNICOM <b>122.8 (CTAF) ①</b>
------------------------	--	---------------------------------



VGSi and RNAV glidepath not coincident (VGSi Angle 3.00/TCH 40).		3000	USACE
4 NM Holding Pattern		COVUT	
GP 3.00° TCH 40		2700	
KOSHO		ODIVE 2.6 NM to RW15	*LNAV only
*1840		*1 NM to RW15	
RW15			
8.8 NM		2.7 NM	1.6 NM
1 NM			
CATEGORY	A	B	C
LPV DA	1234-1	250 (300-1)	NA
LNAV/VNAV DA	1234-1	250 (300-1)	NA
LNAV MDA	1340-1	356 (400-1)	NA
CIRCLING	1560-1	576 (600-1)	NA