

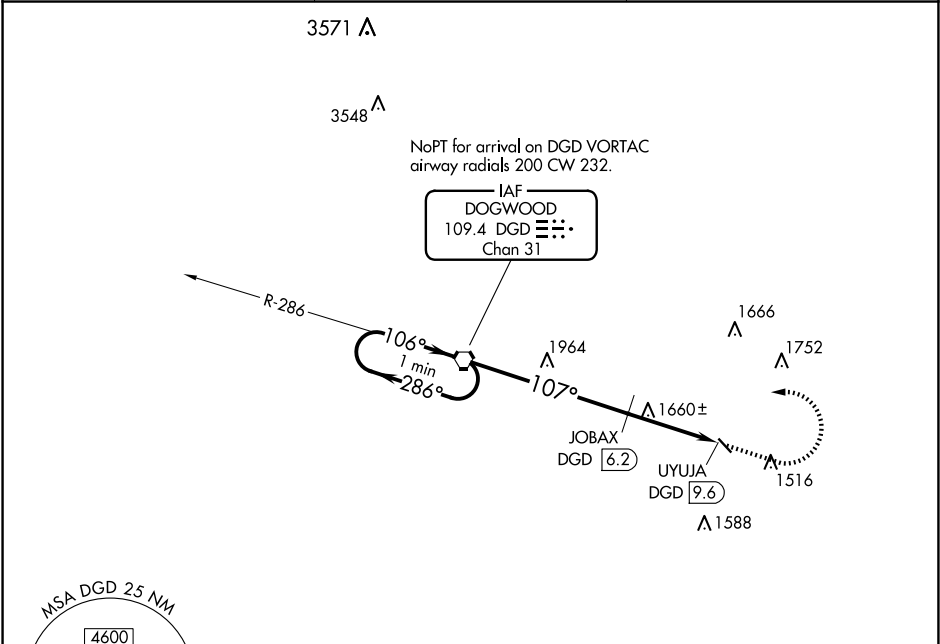
VORTAC DGD 109.4 Chan 31	APP CRS 107°	Rwy Idg TDZE Apt Elev N/A N/A 1311
--	------------------------	--

VOR-A

AVA BILL MARTIN MEML (AOV)

<div><div>Procedure NA at night.</div><div>NA Use Branson altimeter setting, when not received use Springfield Branson Natl altimeter setting.</div></div>	MISSED APPROACH: Climb to 3500 then left turn direct DGD VORTAC and hold.
--	---

BBG AWOS-3 124.625	SPRINGFIELD APP CON 126.35	UNICOM 122.7 (CTAF) 0
------------------------------	--------------------------------------	--



One Minute Holding Pattern				ELEV 1311	
<div>3500 \leftarrow 286° 106° \rightarrow</div> <div>3500 \uparrow DGD VORTAC</div> <div>107°</div> <div>2500</div> <div>JOBAX DGD [6.2]</div> <div>UYUJA DGD [9.6]</div> <div>3.4 NM</div> <div>6.2 NM</div>				<div>3500 \uparrow DGD</div> <div>107°</div> <div>0.9% UP</div> <div>3634 X 50</div> <div>31</div>	
CATEGORY	A	B	C	D	
CIRCLING	2500-1 $\frac{1}{4}$ 1189 (1200-1 $\frac{1}{4}$)	2500-1 $\frac{1}{2}$ 1189 (1200-1 $\frac{1}{2}$)	NA		
JOBAX FIX MINIMUMS (DME REQUIRED)					
CIRCLING	2020-1	709 (800-1)	NA		
				MIRL Rwy 13-31 0	
				FAF to MAP 9.6 NM	
				Knots	60 90 120 150 180
				Min:Sec	9:36 6:24 4:48 3:50 3:12