

SHELL LAKE, WISCONSIN

AL-6541 (FAA)

25163

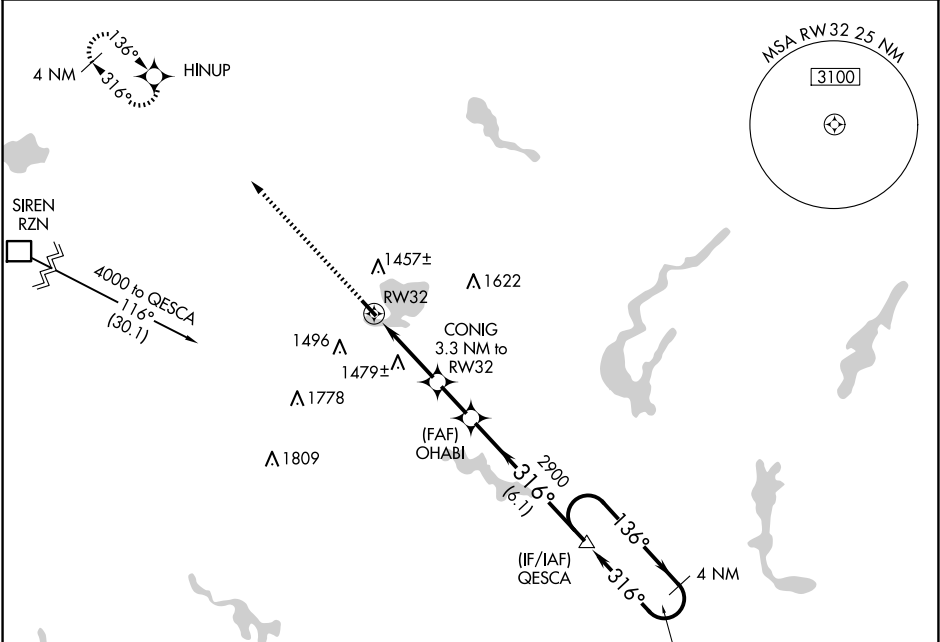
APP CRS	Rwy Ldg	3500
316°	TDZE	1233
	Apt Elev	1233

# RNAV (GPS) RWY 32

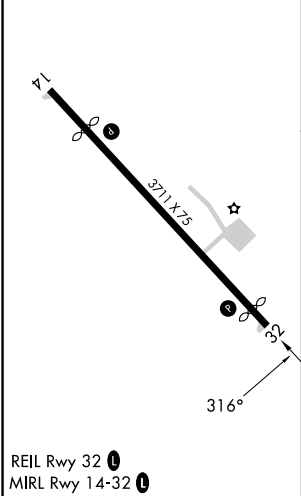
SHELL LAKE MUNI (SSQ)

RNP APCH.	Procedure NA at night. Rwy 32 helicopter visibility reduction below 1 SM NA. Use Cumberland altimeter setting.	MISSED APPROACH: Climb to 4000 direct HINUP and hold.
-----------	---	---

UBE AWOS-3PT 119.175	MINNEAPOLIS CENTER 126.45 276.4	UNICOM 122.8 (CTAF) 0
-------------------------	------------------------------------	--------------------------



ELEV 1233	D	TDZE 1233
-----------	---	-----------



4000 HINUP	VGSI and descent angles not coincident (VGSI Angle 3.00/TCH 23).			
CONIG 3.3 NM to RW32	OHABI	QESCA	4 NM Holding Pattern	
RW32	3.02° TCH 40	2900	136° → 6000	← 316° 4000
3.3 NM	1.8 NM	6.1 NM		
CATEGORY	A	B	C	D
LNAV MDA	1800-1	567 (600-1)	1800-1 5/8 567 (600-1 5/8)	1800-1 3/4 567 (600-1 3/4)
CIRCLING	1840-1	607 (700-1)	1840-1 3/4 607 (700-1 3/4)	2020-2 1/2 787 (800-2 1/2)

SHELL LAKE, WISCONSIN  
Orig-C 21APR22

45°44'N-91°55'W

# RNAV (GPS) RWY 32

EC-3, 07 AUG 2025 to 04 SEP 2025