

WAAS CH <b>45918</b> <b>W13A</b>	APP CRS <b>128°</b>	Rwy Ldg TDZE <b>661</b> Apt Elev <b>663</b>
--	------------------------	---

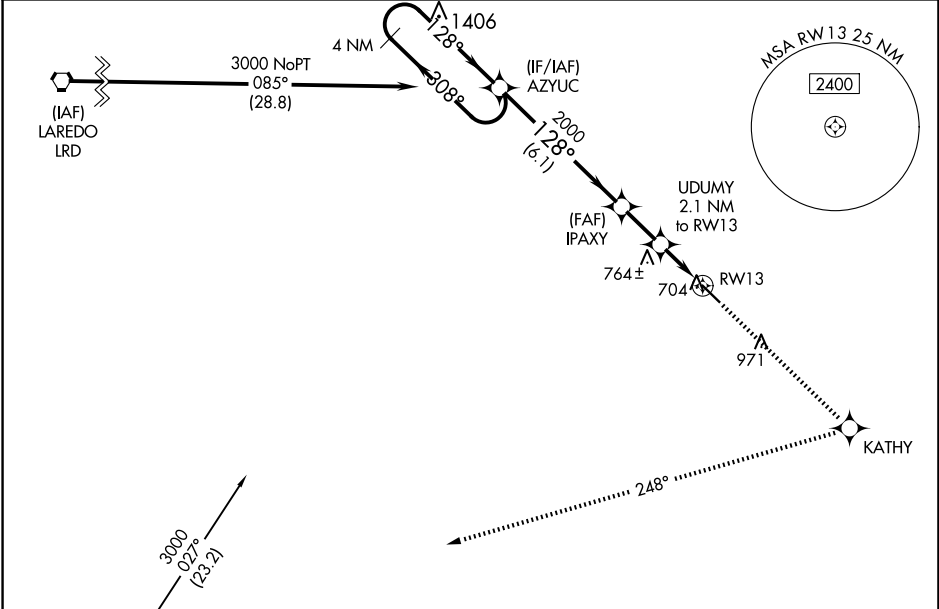
RNAV (GPS) RWY 13  
JIM HOGG COUNTY (HBV)

Baro-VNAV NA when using Laredo altimeter setting. For uncompensated Baro-VNAV systems, LNAV/VNAV NA below -16°C (4°F) or above 54°C (130°F). DME/DME RNP-0.3 NA.

Visibility reduction by helicopters NA. When local altimeter setting not received, use Laredo altimeter setting: increase LPV DA to 1026 feet and all visibilities ¼ SM; increase LNAV/VNAV DA to 1089 feet and all visibilities ½ SM; increase all MDAs 120 feet and increase LNAV Cat C and Circling Cat C visibility ¼ SM. VDP NA with Laredo altimeter setting.

MISSED APPROACH: Climb to 3000 direct KATHY and right turn on track 248° to NELEE and hold

AWOS-3PT <b>118.075</b>	HOUSTON CENTER <b>127.8 307.2</b>	UNICOM <b>122.8 (CTAF) 0</b>
----------------------------	--------------------------------------	---------------------------------



4 NM Holding Pattern		AZYUC		3000	KATHY	NELEE
GP 3.00° TCH 39°		UDUMY 2.1 NM to RW13		*LNAV only		
3000		2000		*1 NM to RW13		
308°		128°		RW13		
128°		*1360		5003 X75		
6.1 NM		1.9 NM		MIRL Rwy 13-31 0		
1.1 NM		1 NM				
CATEGORY	A	B	C	D		
LPV DA	911-1	250 (300-1)		NA		
LNAV/VNAV DA	974-1	313 (400-1)		NA		
LNAV MDA	1020-1	359 (400-1)		NA		
CIRCLING	1040-1 377 (400-1)	1120-1 457 (500-1)	1280-1¾ 617 (700-1¾)	NA		