

SAND POINT, ALASKA

AL-6537 (FAA)

25051

NDB/DME HBT <u>390</u> Chan 79 (113.2)	APP CRS 339°	Rwy Idg 4099 TDZE 24 Apt Elev 24
--	------------------------	---

NDB RWY 32
SAND POINT (SDP) (PASD)

T	Circling NA northeast of Rwy 14-32. DME required.
A	

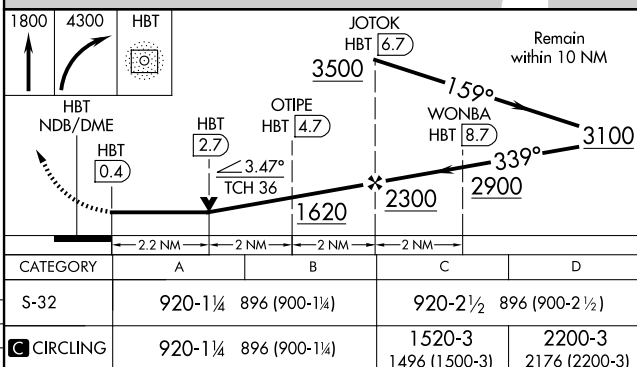
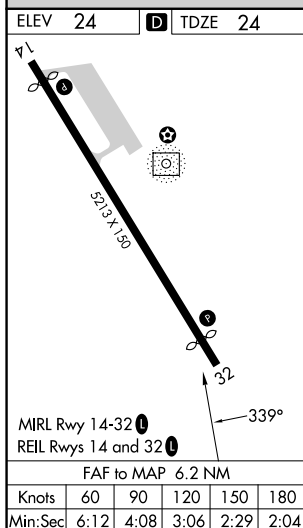
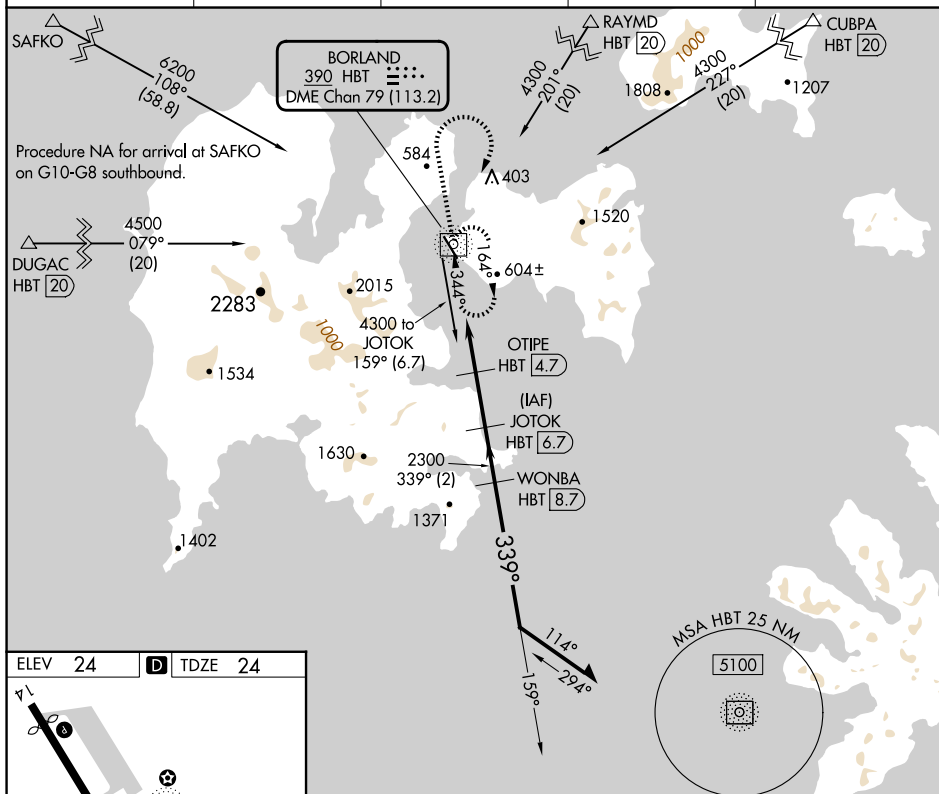
MISSED APPROACH: Climb to 1800 then climbing right turn to 4300 direct HBT NDB and hold, continue climb-in-hold to 4300.

AWOS-3P
134.85

ANCHORAGE CENTER
125.35 346.3

CLNC DEL
122 3 (CTAE) 1

COLD BAY RADIO
122.3

UNICOM
122.8

SAND POINT, ALASKA

Amdt 1 13SEP18

55°19'N-160°31'W

SAND POINT (SDP) (PASD)
NDB RWY 32

AK, 07 AUG 2025 to 02 OCT 2025