

APP CRS	Rwy Idg	4001
359°	TDZE	622
	Apt Elev	622

RNAV (GPS) RWY 36

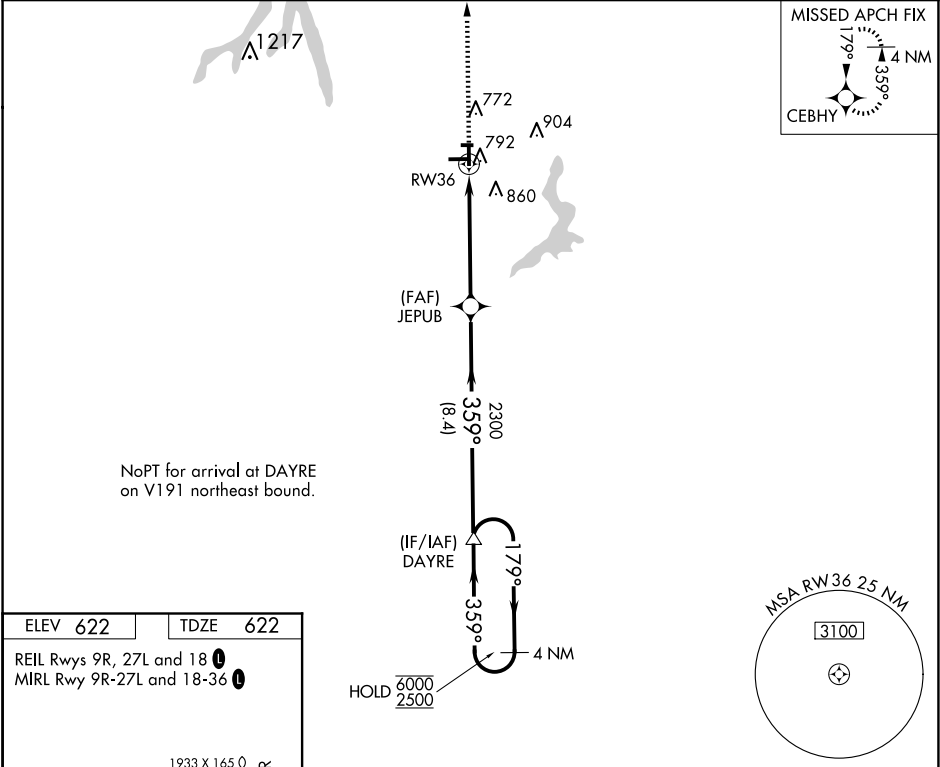
TAYLORVILLE MUNI (TAZ)

RNP APCH - GPS.

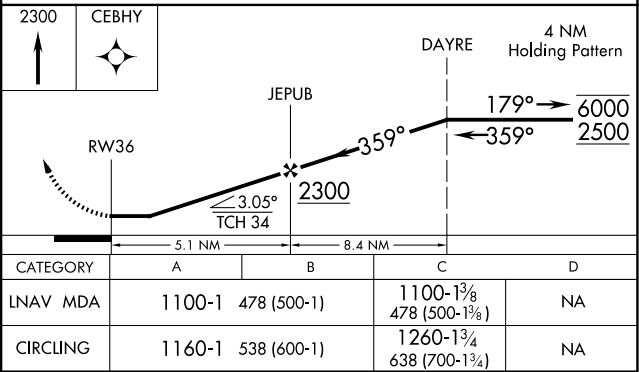
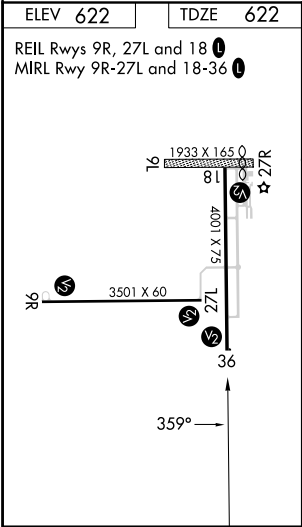
⚠ Rwy 36 helicopter visibility reduction below 1 SM NA. When VGSI inop, Circling Rwy 18 NA at night. Circling NA to Rwy 9L and 27R. When local altimeter setting not received, use Springfield altimeter setting and increase all MDAs 80 feet and LNAV visibility Cat C ¼ SM, and Circling visibility Cat C ¼ SM. LNAV MDA minimums NA at night.

MISSED APPROACH:
Climb to 2300 direct
CEBHY and hold.

AWOS-3PT 123.875	SAINT LOUIS APP CON ★ 126.15 323.0	UNICOM 122.8 (CTAF) 0
---------------------	---------------------------------------	---------------------------------



NoPT for arrival at DAYRE
on V191 northeast bound.



CATEGORY	A	B	C	D
LNAV MDA	1100-1	478 (500-1)	1100-1 3/8 478 (500-1 3/8)	NA
CIRCLING	1160-1	538 (600-1)	1260-1 3/4 638 (700-1 3/4)	NA