

WAAS CH 72807 W14A	APP CRS 147°	Rwy Idg TDZE 1142 Apt Elev 1145
--	------------------------	---

RNAV (GPS) RWY 14

NORTHWEST MISSOURI RGNL (EVU)

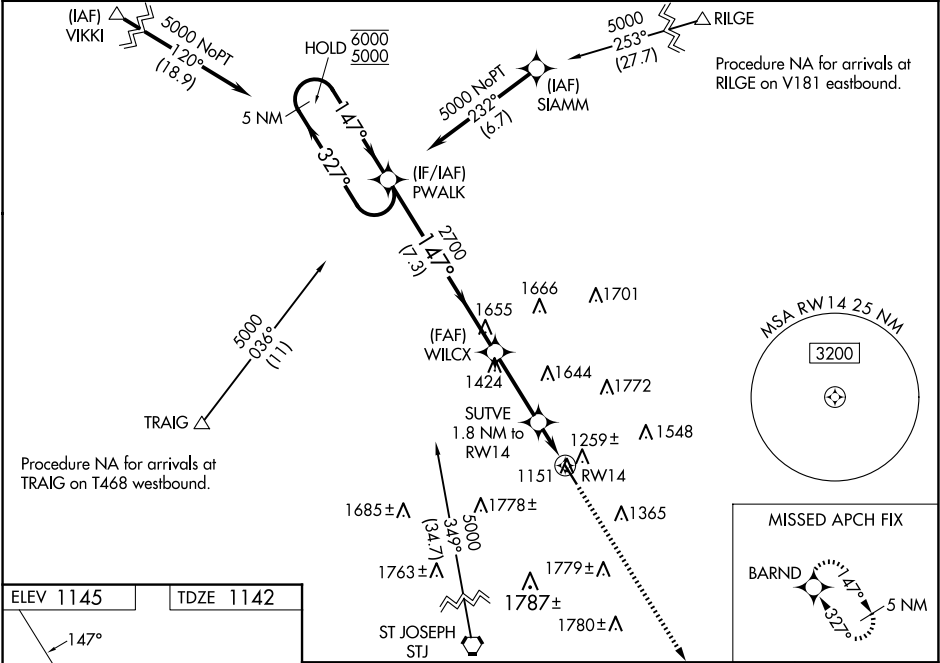
RNP APCH - GPS.

NA

Circling NA east of Rwy 14-32. For uncompensated Baro-VNAV systems, LNAV/VNAV NA below -17°C or above 54°C. When local altimeter setting not received, use St. Joseph altimeter setting and increase LPV DA to 1517 feet, LNAV/VNAV DA to 1682 feet and all visibilities ½ SM. Increase all MDAs 140 feet, and LNAV visibility Cat C ¾ SM. Baro-VNAV and VDP NA when using St. Joseph altimeter setting.

MISSED APPROACH: Climb to 6000 direct BARND and hold, continue climb-in-hold to 6000.

AWOS-3PT 118.225	MINNEAPOLIS CENTER 119.6 290.4	UNICOM 122.8 (CTAF) 0
----------------------------	--	---------------------------------



ELEV 1145

TDZE 1142

MRL Rwy 14-32 0
REIL Rwy 14 and 32 0

5 NM Holding Pattern PWALK					VGSi and RNAV glidepath not coincident (VGSi Angle 3.00/TCH 34).		6000	BARND
GP 3.00° TCH 40					327°	147°	2700	1760
					7.3 NM	3 NM	0.7	1.1
CATEGORY	A	B	C	D				
LPV DA	1392-1 250 (300-1)				NA			
LNAV/VNAV DA	1557-1 415 (500-1)				NA			
LNAV MDA	1520-1 378 (400-1)				NA			
CIRCLING	1560-1 415 (500-1)	1600-1 455 (500-1)	2120-3 975 (1000-3)	NA				

NC-3, 07 AUG 2025 to 04 SEP 2025

NC-3, 07 AUG 2025 to 04 SEP 2025