

WAAS CH <b>86917</b> <b>W05A</b>	APP CRS <b>049°</b>	Rwy Idg <b>5105</b> TDZE <b>24</b> Apt Elev <b>26</b>
--	------------------------	---

## RNAV (GPS) RWY 5

CAPE FEAR RGNL JETPORT/HOWIE FRANKLIN FLD (SUT)

RNP APCH - GPS.
-----------------

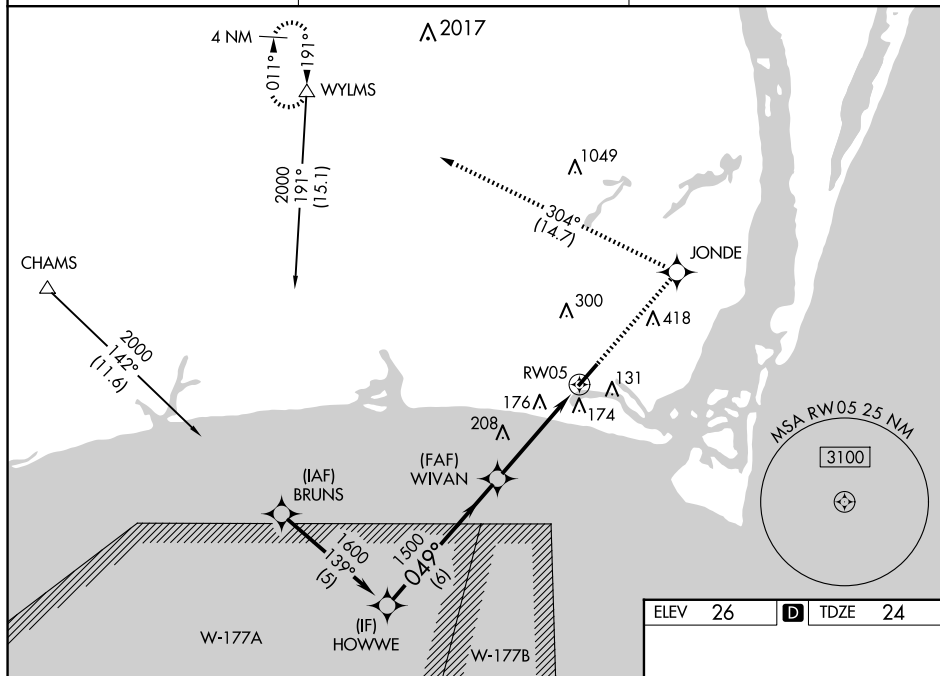
**T** Baro-VNAV NA when using Wilmington altimeter setting. For uncompensated Baro-VNAV systems, LNAV/VNAV NA below -15°C or above 54°C. Rwy 5 helicopter visibility reduction below ¾ SM NA. **A** When local altimeter setting not received, use Wilmington altimeter setting and increase LPV DA to 325 feet, increase LNAV/VNAV DA to 511 feet, increase all MDAs 60 feet and LNAV visibility Cat C ½ SM, and Circling visibility Cat C ¼ SM. VDP NA when using Wilmington altimeter setting.

**MISSED APPROACH:**  
Climb to 3000 direct  
JONDE and left turn  
on track 304° to  
WYLS and hold.

AWOS-3P  
124.175

WILMINGTON APP CON ★  
118.25 284.65

UNICOM  
123.05 (CTAF) **L**



Procedure  
Turn  
NA

HOWWE

1600

049°

GP 3.00°  
TCH 39

1500

WIVAN  
1500

6 NM

3.2 NM

1.3 NM

1.3 NM to RW05

\* 1.3 NM to RW05

RW05

tr 304°

WYLMs  
△

\* 1.3 NM to RW05

CATEGORY	A	B	C	D
LPV DA	274-1	250 (300-1)		NA
LNAV/ VNAV DA	460-1½	436 (500-1½)		NA
LNAV MDA	460-1	436 (500-1)	460-1¼ 436 (500-1¼)	NA
CIRCLING	480-1 454 (500-1)	520-1 494 (500-1)	720-2 694 (700-2)	NA

