

WAAS CH 78047 W17A	APP CRS 173°	Rwy Ldg TDZE Apt Elev	4001 1551 1551
--	------------------------	-----------------------------	---

RNAV (GPS) RWY 17

WATONGA RGNL (JWG)

RNP APCH - GPS.

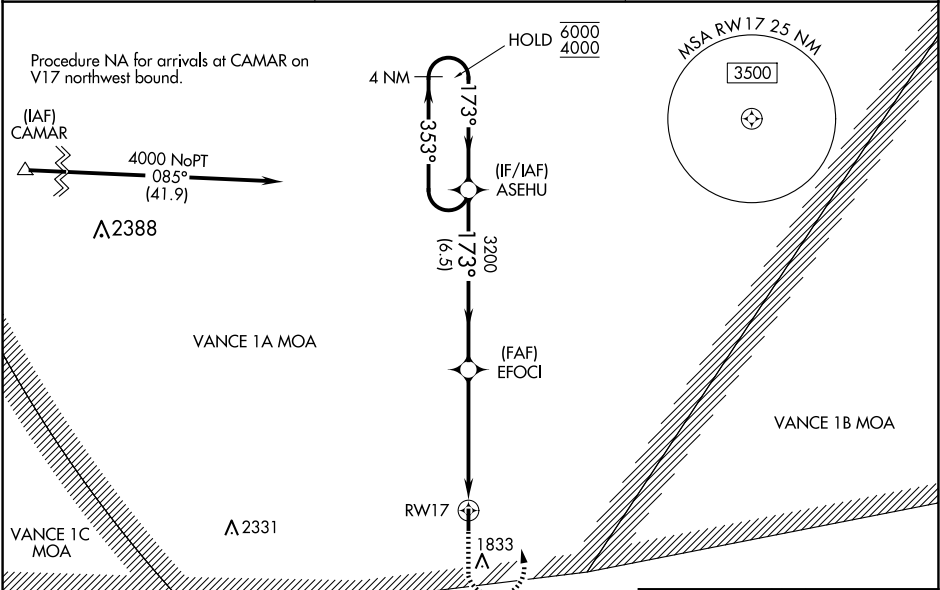
▼

▲

For uncompensated Baro-VNAV systems, LNAV/VNAV NA below -18°C or above 54°C. Baro-VNAV and VDP NA when using CLK altimeter setting. When local altimeter setting not received, use CLK altimeter setting and increase LPV DA to 1887 feet and all visibilities ¼ SM; increase LNAV/VNAV DA to 2086 feet and all visibilities ¼ SM; increase all MDAs 100 feet and LNAV visibility Cat C ¾ SM and Circling visibility Cat C ½ SM.

MISSED APPROACH: Climb to 2100 then climbing left turn to 4000 direct ASEHU and hold.

AWOS-3 134.175	VANCE APP CON ★ 126.75 346.325	UNICOM 122.8 (CTAF) 0
--------------------------	--	---------------------------------



Procedure NA for arrivals at ODINS on V17 southeast bound.

4000 to ASEHU 348° (21.7)

ODINS

4 NM Holding Pattern ASEHU

6000 ← 353°

4000 → 173°

GP 3.00° TCH 40

3200

6.5 NM

3.6 NM

1.5 NM

2100

4000

ASEHU

EFOCI

3200

1.5 NM to RW17

RW17

CATEGORY	A	B	C	D
LPV DA	1801-¾	250 (300-¾)		NA
LNAV/VNAV DA	2000-1⅓	449 (500-1⅓)		NA
LNAV MDA	2020-1	469 (500-1)	2020-1⅓ 469 (500-1⅓)	NA
CIRCLING	2040-1 489 (500-1)	2140-1 589 (600-1)	2140-1½ 589 (600-1½)	NA

ELEV 1551

TDZE 1551

173°

Z1

4001 X 60

0.5% UP

35

★

MIRL Rwy 17-35 0