

APP CRS	Rwy Idg	5003
235°	TDZE	1458
	Apt Elev	1458

RNAV (GPS) RWY 24

CLARION COUNTY (AXQ)

RNP APCH.

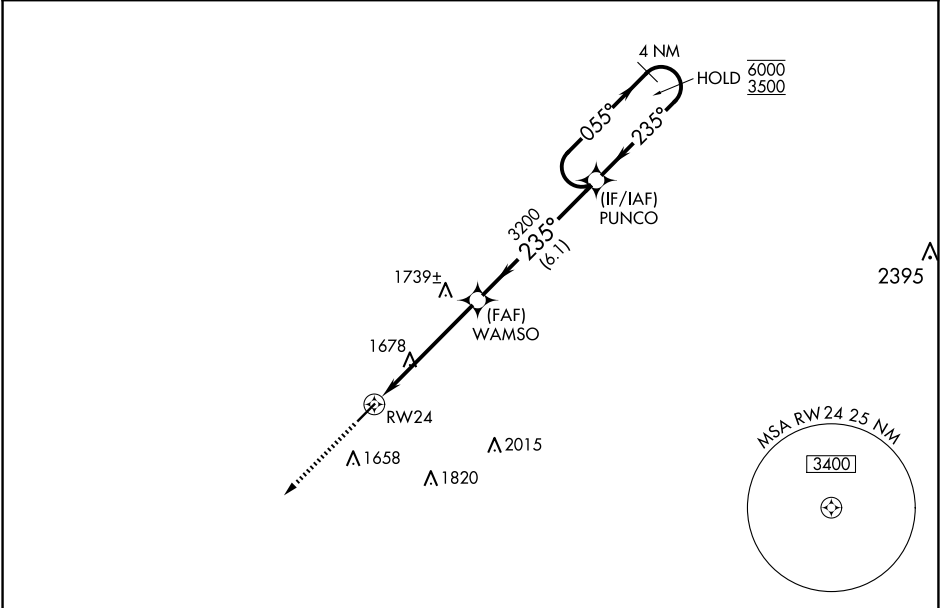
▼

▲NA

Rwy 24 helicopter visibility reduction below ¾ SM NA. VDP NA when using Dubois altimeter setting. When local altimeter setting not received, use Dubois altimeter setting and increase all MDA 120 feet and LNAV Cat B/C/D and Circling Cat C visibility ⅝ SM, Circling Cat B visibility ¼ SM, Cat D visibility ½ SM.

MISSED APPROACH:
Climb to 3100 direct LOCPI and hold.

AWOS-3 118.275	CLEVELAND CENTER 126.725 291.65	UNICOM 122.8 (CTAF) 0
-------------------	------------------------------------	--------------------------



LOCPI

3100

↑

LOCPI

4 NM Holding Pattern

1.9 NM to RW24

WAMSO

3200

3.04°

TCH 40

6.1 NM

PUNCO

055°

235°

6000

3500

CATEGORY	A	B	C	D
LNAV MDA	2100-1 642 (700-1)		2100-1⅞ 642 (700-1⅞)	2100-2 642 (700-2)
CIRCLING	2100-1 642 (700-1)		2100-1⅞ 642 (700-1⅞)	2180-2¼ 722 (800-2¼)

