

WAAS CH 99730 W21A	APP CRS 217°	Rwy Idg 5007 TDZE 1372 Apt Elev 1372
--	------------------------	---

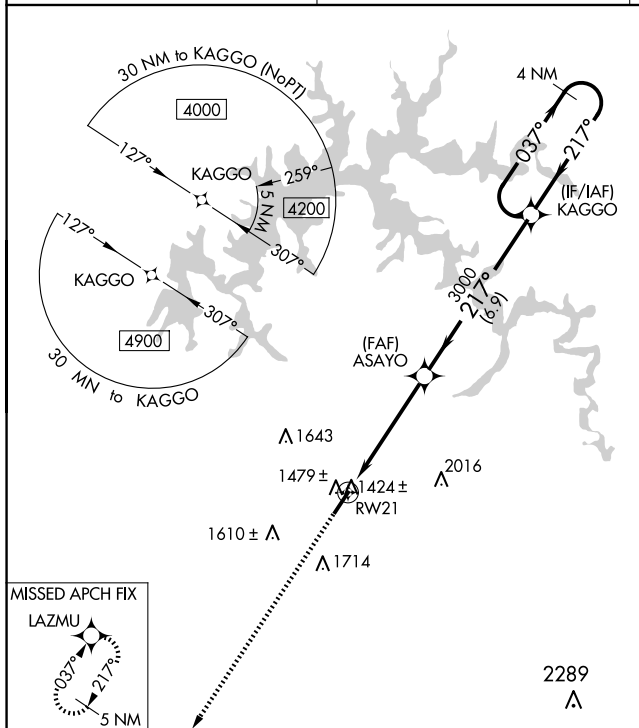
RNAV (GPS) RWY 21
LIVINGSTON MUNI (8A3)

RNP APCH - GPS.

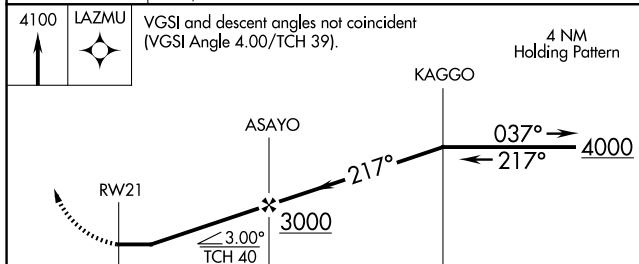
⚠ Circling Rwy 3 NA at night. When local altimeter setting not received, use Crossville altimeter setting and increase all MDA 140 feet; increase LP and LNAV Cats C/D visibility $\frac{3}{8}$ mile; increase Circling Cat D visibility $\frac{1}{4}$ mile and Circling Cats C/D visibility $\frac{1}{2}$ mile. Rwy 21 helicopter visibility reduction below $\frac{1}{2}$ SM NA.

MISSED APPROACH:
Climb to 4100 direct
LAZMU and hold.

AWOS-3 126.175	INDIANAPOLIS CENTER 124.625 371.925	UNICOM 122.8 (CTAF) 0
--------------------------	---	---------------------------------



MISSED APCH FIX
LAZMU
037°
217°
5 NM



		5 NM	6.9 NM	
CATEGORY	A	B	C	D
LP MDA	1700-1		328 (400-1)	
LNAV MDA	1760-1	388 (400-1)	1760-1½	388 (400-1½)
CIRCLING	1880-1 508 (600-1)	2080-1 708 (800-1)	2080-2 708 (800-2)	2360-3 988 (1000-3)

