

WAAS CH 82600 W11A	APP CRS 109°	Rwy Ldg TDZE 310 Apt Elev 310
--	------------------------	---

RNAV (GPS) RWY 11

SOUTH ALABAMA RGNL AT BILL BENTON FLD (79J)

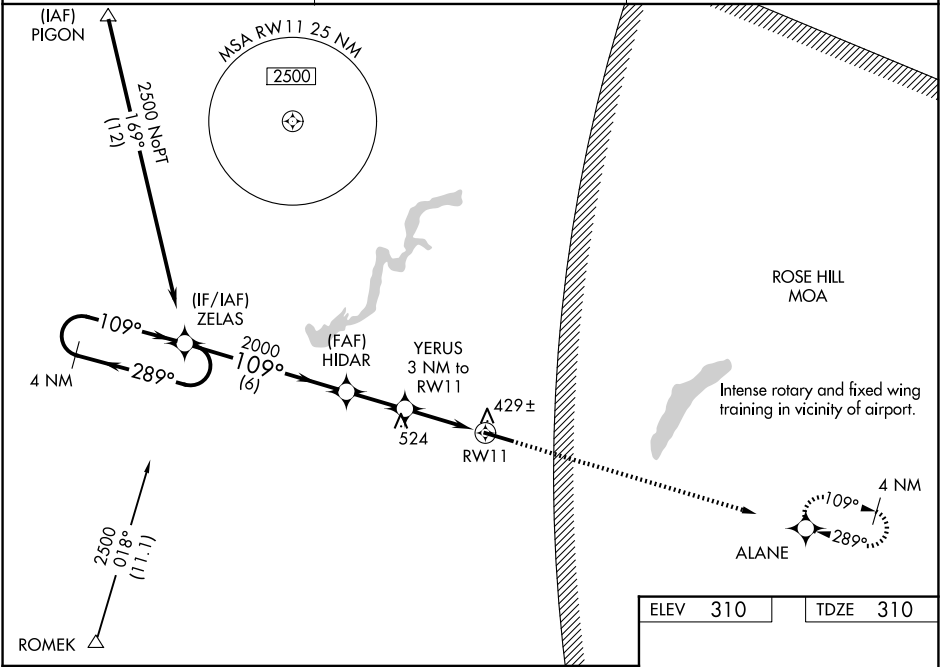
▼

▲

For uncompensated Baro-VNAV systems, LNAV/VNAV NA below -15°C (5°F) or above 54°C (130°F). DME/DME RNP-0.3 NA. Helicopter visibility reduction below ¾ SM NA. When local altimeter setting not received, use Cairns AAF (Fort Novosel) altimeter setting and increase all DA 82 feet, all MDA 100 feet. Increase all LPV and LNAV/VNAV visibilities ¾ mile all Cats, LNAV and Circling Cats C and D ¼ mile. Baro-VNAV and VDP NA when using Cairns AAF (Fort Novosel) altimeter setting.

MISSED APPROACH: Climb to 2000 direct ALANE and hold.

ASOS 134.875	CAIRNS APP CON ★ 133.45 239.275	UNICOM 122.8 (CTAF) 0
------------------------	---	---------------------------------



4 NM Holding Pattern		ZELAS	VGSI and RNAV glidepath not coincident (VGSI Angle 3.00/TCH 33).		2000 ALANE
2500		289°	109°	109°	2000
GP 3.00°		TCH 40	2000	*1300	*1.3 NM to RW11
6 NM		2.2 NM	1.7	1.3	RW11
CATEGORY	A	B	C	D	
LPV DA	615-1 305 (400-1)				
LNAV/VNAV DA	655-1½ 345 (400-1½)				
LNAV MDA	760-1	450 (500-1)	760-1¾	450 (500-1¾)	
CIRCLING	820-1	510 (600-1)	860-1½	940-2	
			550 (600-1½)	630 (700-2)	

ELEV 310 TDZE 310

MIRL Rwy 11-29 0
REIL Rwy 11 and 29