

APP CRS  
**132°**

Rwy Idg  
TDZE  
**1206**

**3401**  
Apt Elev  
**1206**

**RNAV (GPS) RWY 13**

EMMETSBURG MUNI (E/GQ)

RNP APCH-GPS.

▼

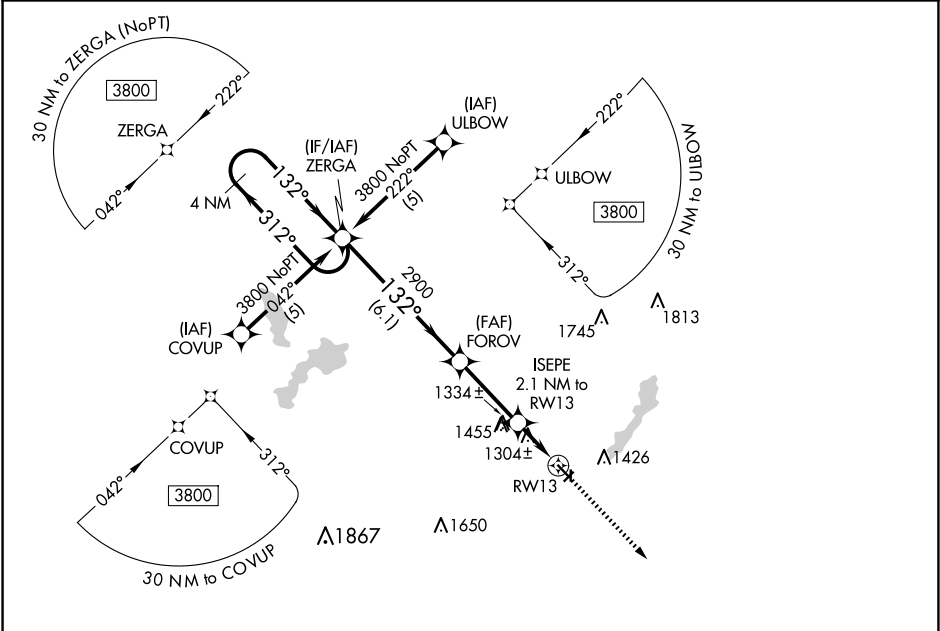
▲ NA

Use Algona altimeter setting, when not received, use Estherville altimeter setting. Procedure NA at night. Circling NA to Rwy's 4, 17, 22 and 35. Rwy 13 helicopter visibility reduction below 1 SM NA.

MISSED APPROACH: Climb to 3800 direct HIVEN and hold.

MINNEAPOLIS CENTER  
**127.75 257.7**

UNICOM  
**122.8 (CTAF) 0**



ELEV 1206

TDZE 1206

This inset chart shows the intersection of Rwy 13 and Rwy 31. Rwy 13 is 3401' x 60' wide, and Rwy 31 is 2537' x 70' wide. The intersection is at an altitude of 1206 feet. Other runways shown include 2157' x 150' and 35'.

MIRL Rwy 13-31 0

REIL Rwy's 13 and 31 0

VGSI and descent angles not coincident  
(VGSI Angle 4.00/TCH 54).

3800

HIVEN

4 NM Holding Pattern

ZERGA

FOROV

ISEPE 2.1 NM to RWY 13

RWY 13

3800

2900

1900

6.1 NM

3 NM

2.1 NM

| CATEGORY | A                     | B                     | C  | D  |
|----------|-----------------------|-----------------------|----|----|
| LNAV MDA | 1620-1                | 414 (500-1)           | NA | NA |
| CIRCLING | 1780-1<br>574 (600-1) | 1840-1<br>635 (700-1) | NA | NA |