

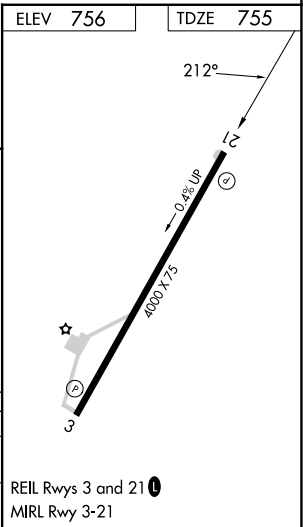
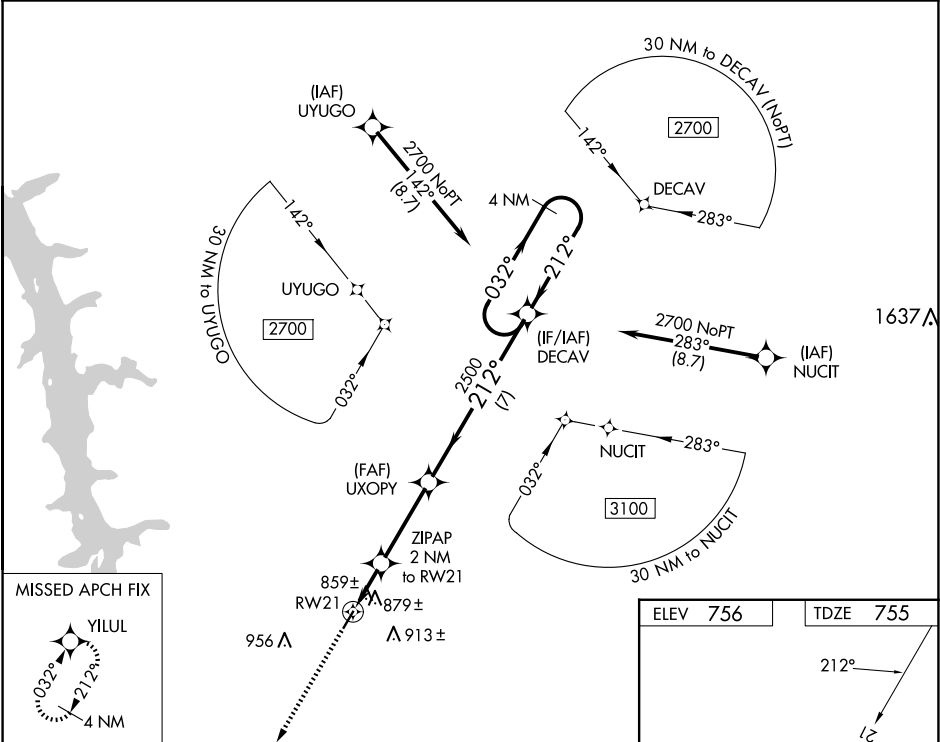
WAAS CH <b>97422</b> <b>W21A</b>	APP CRS <b>212°</b>	Rwy Idg TDZE <b>755</b> Apt Elev <b>756</b>
--	------------------------	---



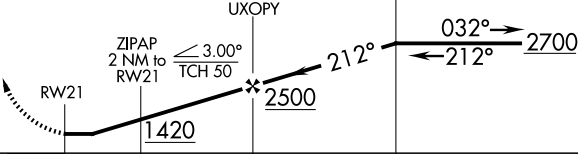
RNAV (GPS) RWY 21

HUMPHREYS COUNTY (ØM5)

RNP APCH.	MISSED APPROACH: Climb to 2500 direct YILUL and hold.
▼ NA	When local altimeter setting not received, use Nashville Intl altimeter setting: increase all MDA 160 feet and visibility Cat C and D ½ SM. Procedure NA at night. Rwy 21 helicopter visibility reduction below 1 SM NA.

MEMPHIS CENTER <b>125.85 379.25</b>	UNICOM <b>122.8 (CTAF) 0</b>
--	---------------------------------



2500	YILUL	4 NM Holding Pattern			
					
CATEGORY	A	B	C	D	
LP MDA	1120-1 365 (400-1)				
LNAV MDA	1140-1 385 (400-1)		1140-1½ 385 (400-1½)		

SE-1, 07 AUG 2025 to 04 SEP 2025

SE-1, 07 AUG 2025 to 04 SEP 2025