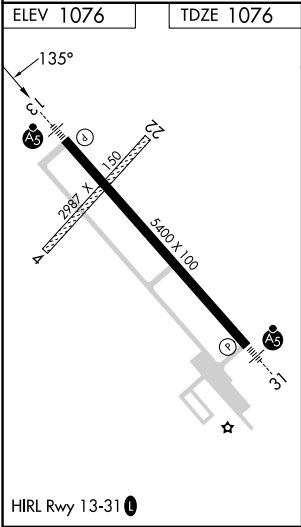
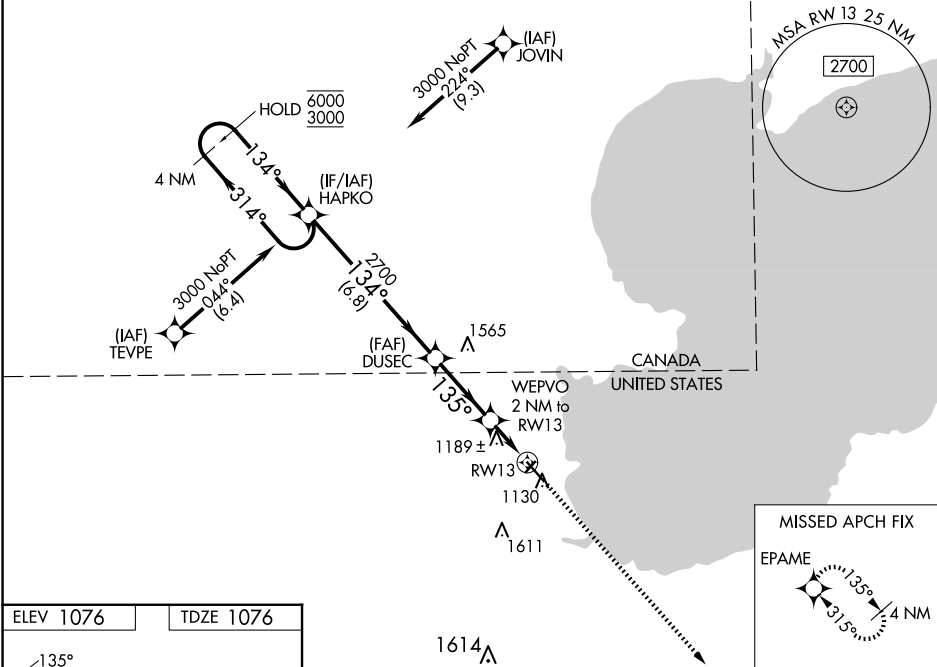


WAAS CH 69437 W13A	APP CRS 135°	Rwy Idg TDZE Apt Elev	5400 1076 1076
--	------------------------	-----------------------------	---

RNAV (GPS) RWY 13
WARROAD INTL MEML (R.T)

RNP APCH. <div><div></div><div></div><div>Circling NA to Rwy 4 and 22. Inop table does not apply. For uncompensated Baro-VNAV systems, LNAV/VNAV NA below -21°C or above 54°C.</div></div>		MALSR <div><div></div><div></div><div></div></div>	MISSED APPROACH: Climb to 3000 direct EPAME and hold.
AWOS-3 119.925	MINNEAPOLIS CENTER 134.75 251.1	GCO 121.725	UNICOM 123.05 (CTAF) 0



4 NM Holding Pattern		VGSi and RNAV glidepath not coincident (VGSi Angle 3.00/TCH 29).		3000	EPAME
HAPKO		DUSEC		WEPVO 2 NM to RW13	
6000 ← 314°		2700		*1.1 NM to RW13	
3000 → 134°		134°		RW13	
GP 3.00°		*1740		1.1	
TCH 45		6.8 NM		3 NM	
				0.9 NM	
CATEGORY	A	B	C	D	
LPV DA	1276-¾ 200 (200-¾)				
LNAV/VNAV DA	1365-1 289 (300-1)				
LNAV MDA	1440-1 364 (400-1)				
CIRCLING	1500-1 424 (500-1)	1540-1 464 (500-1)	1960-2¾ 884 (900-2¾)	1960-3 884 (900-3)	