

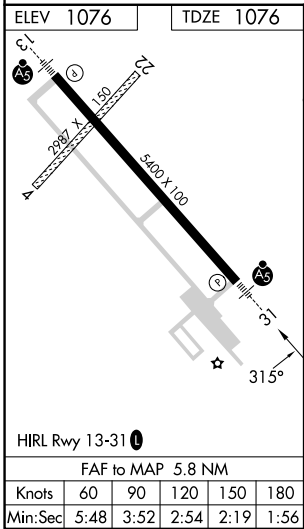
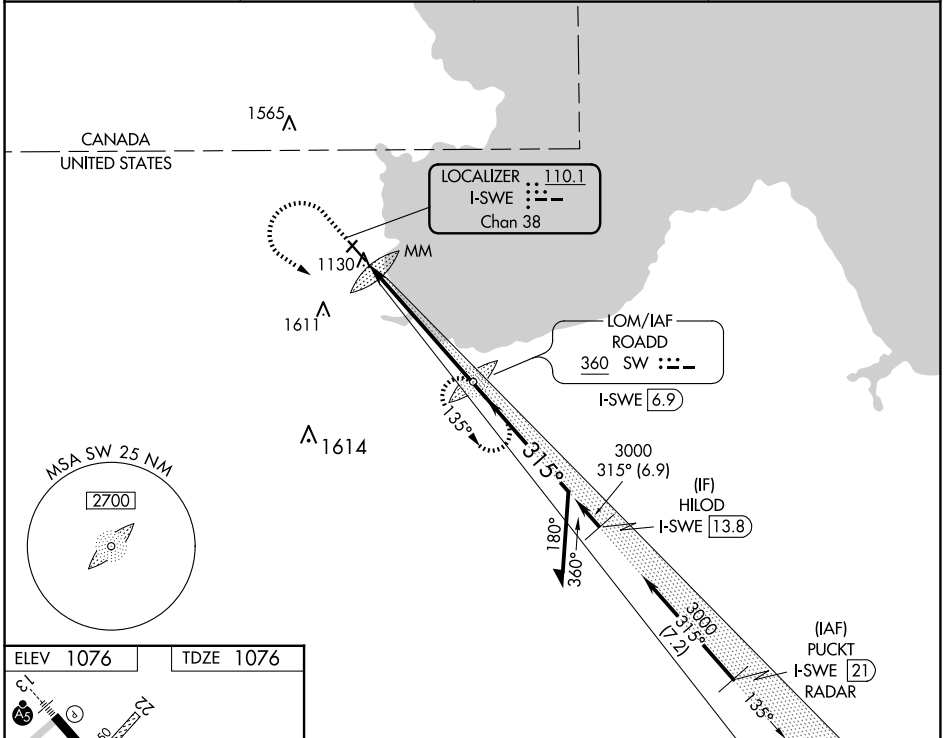
LOC/DME I-SWE 110.1 Chan 38	APP CRS 315°	Rwy Idg TDZE Apt Elev	5400 1076 1076
---	------------------------	-----------------------------	---




ILS or LOC RWY 31

WARROAD INTL MEML (R.R.T)

ADF required. RADAR required for procedure entry.	MALSR	MISSED APPROACH: Climb to 2900 then climbing left turn to 3000 direct ROADDD LOM/I-SWE 6.9 DME and hold.
<div><div>NA</div><div>Circling NA to Rwys 4 and 22. For inop ALS, increase S-LOC 31 Cat C/D visibility to 1 3⁄8 SM.</div></div>	<div><div>AS</div></div>	

AWOS-3 119.925	MINNEAPOLIS CENTER 134.75 251.1	GCO 121.725	UNICOM 123.05 (CTAF) 0
--------------------------	---	-----------------------	---



2900	3000	SW	SW LOM	VGSI and ILS glidepath not coincident (VGSI Angle 3.00/TCH 29).
			ROADD	
* LOC only			I-SWE (6.9)	
			2997	Remain within 10 NM
				135°
				315°
				3000
				GS 3.00° TCH 45
	</			

NC-1, 07 AUG 2025 to 04 SEP 2025

NC-1, 07 AUG 2025 to 04 SEP 2025