

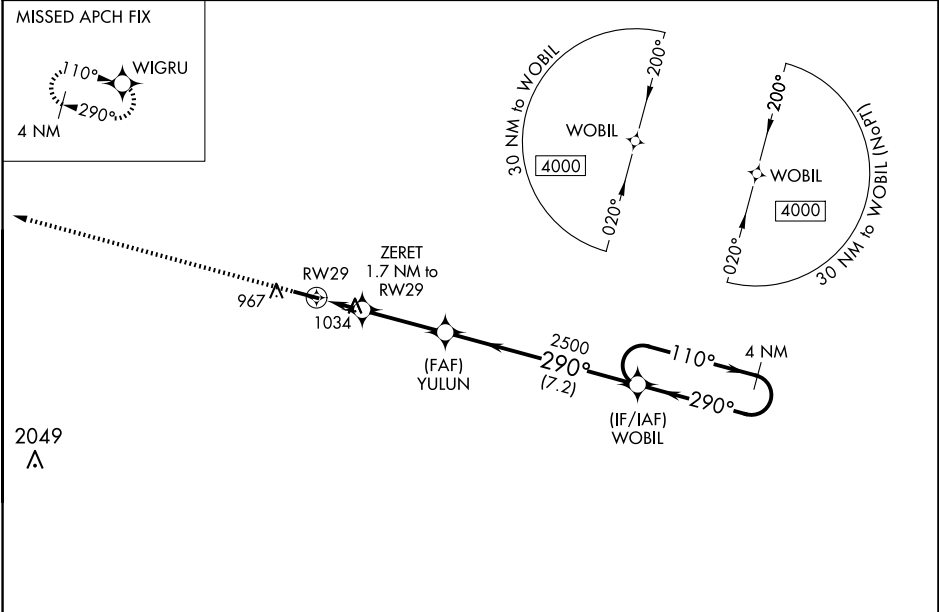
WAAS CH 86422 W29A	APP CRS 290°	Rwy Idg 4801 TDZE 870 Apt Elev 871
--	------------------------	---

RNAV (GPS) RWY 29
LEBANON SPRINGFIELD-GEORGE HOERTER FLD (6I2)

⚠ For uncompensated Baro-VNAV systems, LNAV/VNAV NA below -16°C (4°F) or above 45°C (114°F).
⚠ When local altimeter setting not received, use Danville altimeter setting and increase all DA 74 feet and all MDA 80 feet; increase LPV all Cats and LNAV Cats C/D visibility 1/8 mile; LNAV/VNAV all Cats visibility 3/8 mile and Circling Cat D visibility 1/4 mile. DME/DME RNP-0.3 NA. Helicopter visibility reduction below 3/4 SM NA. Baro-VNAV and VDP NA when using Danville altimeter setting.

MISSED APPROACH:
Climb to 4000 direct WIGRU and hold.

AWOS-3P 119.725	LOUISVILLE APP CON 132.075 327.0	UNICOM 122.8 (CTAF) 0
---------------------------	--	---------------------------------



ELEV 871 TDZE 870

4000 WIGRU

VGSI and RNAV glidepath not coincident (VGSI Angle 3.30/TCH 27).

4 NM Holding Pattern

WOBIL

YULUN 2500

ZERET 1.7 NM to RW29

*LNAV only

*1.3 NM to RW29

*1480

2500

GP 3.10° TCH 54

110° → 4000

← 290°

1.3 NM 0.4 NM 3.1 NM 7.2 NM

CATEGORY	A	B	C	D
LPV DA		1152-1	282 (300-1)	
LNAV/VNAV DA		1279-1¼	409 (500-1¼)	
LNAV MDA	1300-1	430 (500-1)	1300-1¼	430 (500-1¼)
CIRCLING	1320-1 449 (500-1)	1340-1 469 (500-1)	1360-1½ 489 (500-1½)	1500-2 629 (700-2)

SE-1, 07 AUG 2025 to 04 SEP 2025

SE-1, 07 AUG 2025 to 04 SEP 2025