

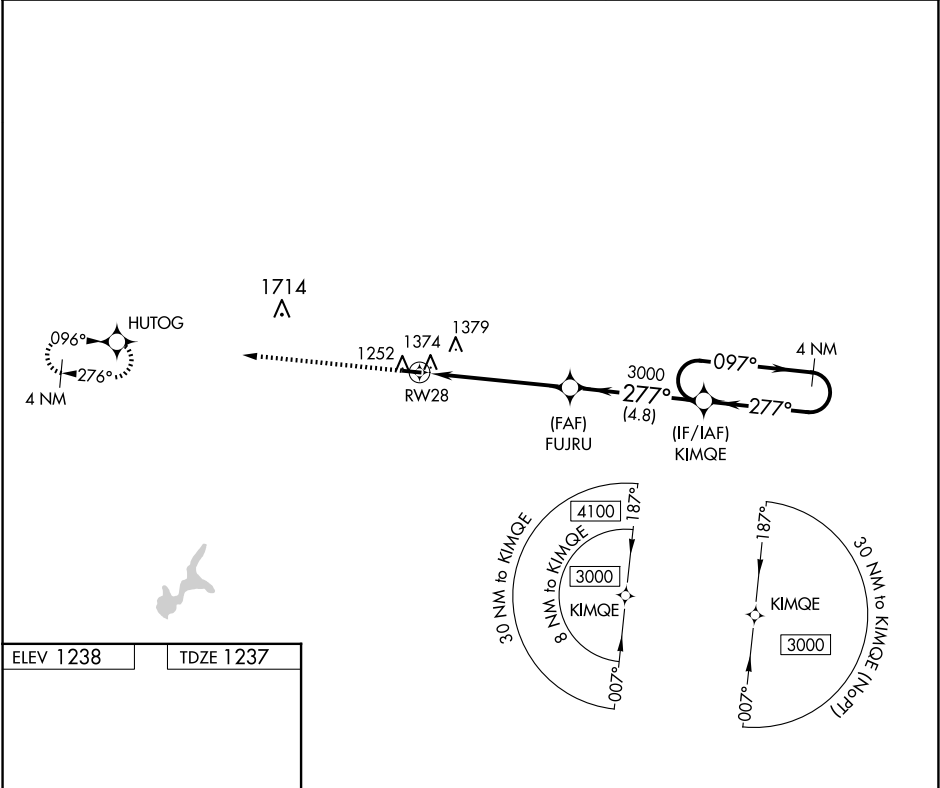
APP CRS	Rwy Idg	3400
277°	TDZE	1237
	Apt Elev	1238

RNAV (GPS) RWY 28

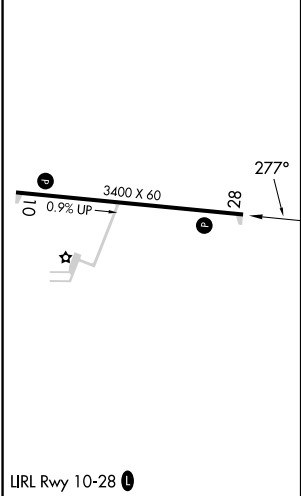
NEILLSVILLE MUNI (VIQ)


RNP APCH.	<div><div>▼</div><div>NA</div></div> <div>Rwy 28 helicopter visibility reduction below ¾ SM NA. Use Marshfield altimeter setting; when not received, use Wisconsin Rapids altimeter setting and increase all MDA 80 feet.</div>	MISSED APPROACH: Climb to 3000 direct HUTOG and hold.
-----------	---	--

MFI ASOS 121.575	MINNEAPOLIS CENTER 124.4 317.7	UNICOM 122.8 (CTAF) 1
---------------------	-----------------------------------	--------------------------



ELEV 1238	TDZE 1237
-----------	-----------



<div>3000 ↑</div> <div>HUTOG </div>		Visual Segment - Obstacles.		4 NM Holding Pattern	
<div></div>					