

WAAS CH <b>90131</b> <b>W10A</b>	APP CRS <b>097°</b>	Rwy Idg TDZE <b>1236</b> Apt Elev <b>1238</b>
--	------------------------	---

RNAV (GPS) RWY 10

NEILLSVILLE MUNI (VIQ)

▼

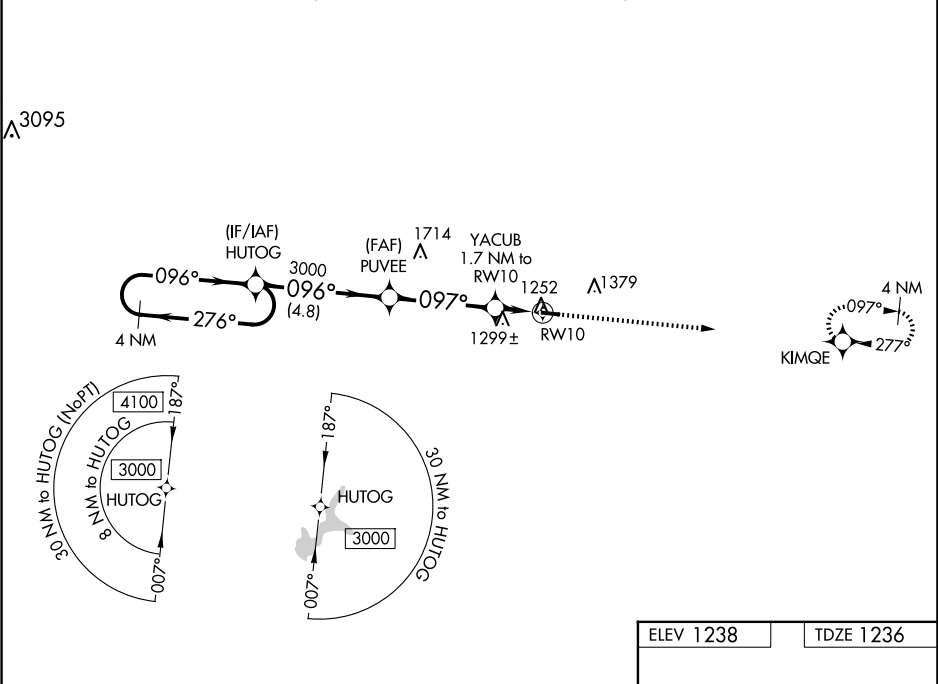
Baro-VNAV NA. DME/DME RNP-0.3 NA. Helicopter visibility reduction below ¾ SM NA. Use Marshfield altimeter setting; when not received, use Wisconsin Rapids altimeter setting and increase all DA 63 feet and all MDA 80 feet. Increase LPV and LNAV/VNAV Cats A/B visibility ¼ mile.

⚠

NA

MISSED APPROACH: Climb to 3000 direct KIMQE and hold.

MFI ASOS <b>121.575</b>	MINNEAPOLIS CENTER <b>124.4 317.7</b>	UNICOM <b>122.8 (CTAF) 0</b>
----------------------------	--	---------------------------------



4 NM Holding Pattern		VGSI and RNAV glidepath not coincident (VGSI Angle 3.00/TCH 32).		3000	KIMQE
HUTOG		PUVEE		YACUB	* LNAV only
3000		3000		1.7 NM to RWY 10	
GP 3.00° TCH 40		*1780		RWY 10	
4.8 NM		3.8 NM		1.7 NM	
CATEGORY	A	B	C	D	
LPV DA	1526-1	290 (300-1)	NA		
LNAV/VNAV DA	1526-1	290 (300-1)	NA		
LNAV MDA	1600-1	364 (400-1)	NA		
CIRCLING	1720-1	482 (500-1)	NA		

ELEV 1238

TDZE 1236

097°

3400 X 60

0.9% UP

28

LIRL Rwy 10-28 0