

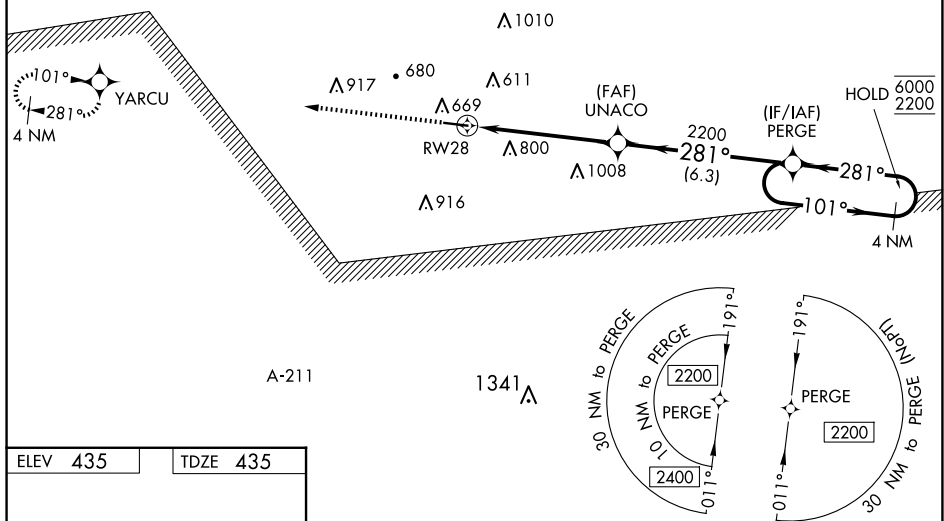
23166

RNAV (GPS) RWY 28
CLAYTON MUNI (11A)

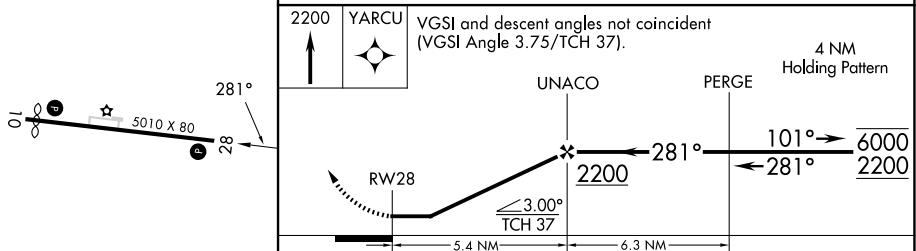
T Rwy 28 helicopter visibility reduction below $\frac{3}{4}$ SM NA. Use Eufaula altimeter setting; when not received, use Troy altimeter setting.

MISSED APPROACH:
Climb to 2200 direct
YARCU and hold.

<p>EUFS ASOS</p> <p>128.325</p>	<p>CAIRNS APP CON *</p> <p>121.1 319.25</p>	<p>CTAF</p> <p>122.90</p>
--	--	----------------------------------



ELEV 435		TDZE 435
----------	--	----------



CATEGORY	A	B	C	D
LP MDA	1140-1	705 (800-1)	1140-2	705 (800-2)
LNAV MDA	1140-1	705 (800-1)	1140-2	705 (800-2)
C CIRCLING	1180-1	745 (800-1)	1180-2 ¹ / ₄ 745 (800-2 ¹ / ₄)	1300-2 ³ / ₄ 865 (900-2 ³ / ₄)

REIL Rwy 10 and 28
HRL Rwy 10-28

31°53'N-85°29'W

CLAYTON MUNI (11A)

RNAV (GPS) RWY 28

SE-4, 07 AUG 2025 to 04 SEP 2025