

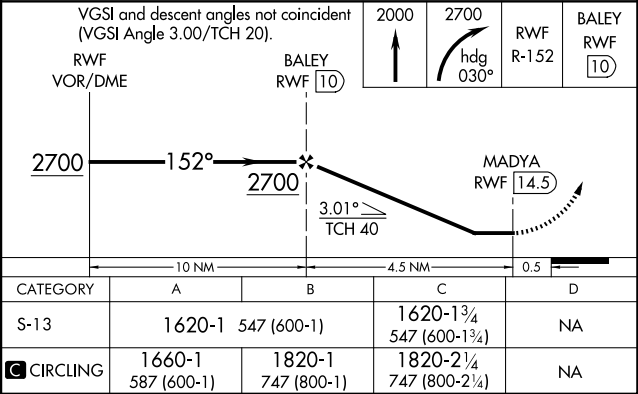
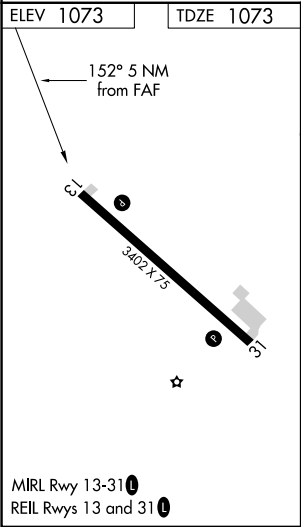
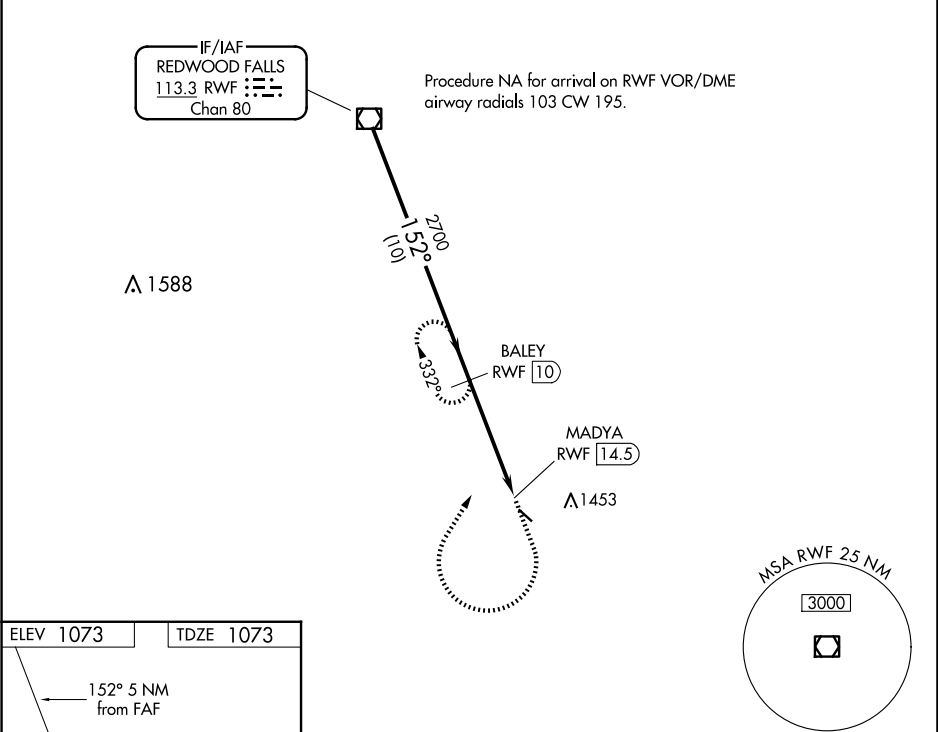
VOR/DME RWF	APP CRS	Rwy Idg	3402
113.3	152°	TDZE	1073
Chan 80		Apt Elev	1073

VOR RWY 13

SPRINGFIELD MUNI (D42)

DME required.	MISSED APPROACH: Climb to 2000 then climbing right turn to 2700 on heading 030° and RWF R-152 to BAILEY/10 DME and hold.
<div><div>▼</div><div>NA</div></div> Procedure NA at night. Rwy 13 helicopter visibility reduction below 1 SM NA. Use Redwood Falls altimeter setting.	

RWF ASOS 126.575	MINNEAPOLIS CENTER 127.1 290.2	UNICOM 122.8 (CTAF) 0
---------------------	-----------------------------------	--------------------------



NC-1, 07 AUG 2025 to 04 SEP 2025

NC-1, 07 AUG 2025 to 04 SEP 2025