

APP CRS	Rwy Idg	3402
310°	TDZE	1073
	Apt Elev	1073

RNAV (GPS) RWY 31
SPRINGFIELD MUNI (D42)

RNP APCH.

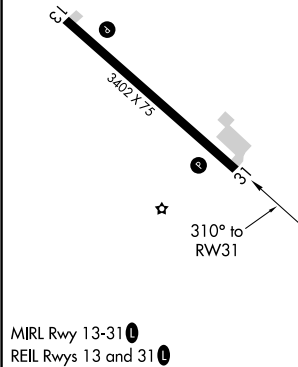
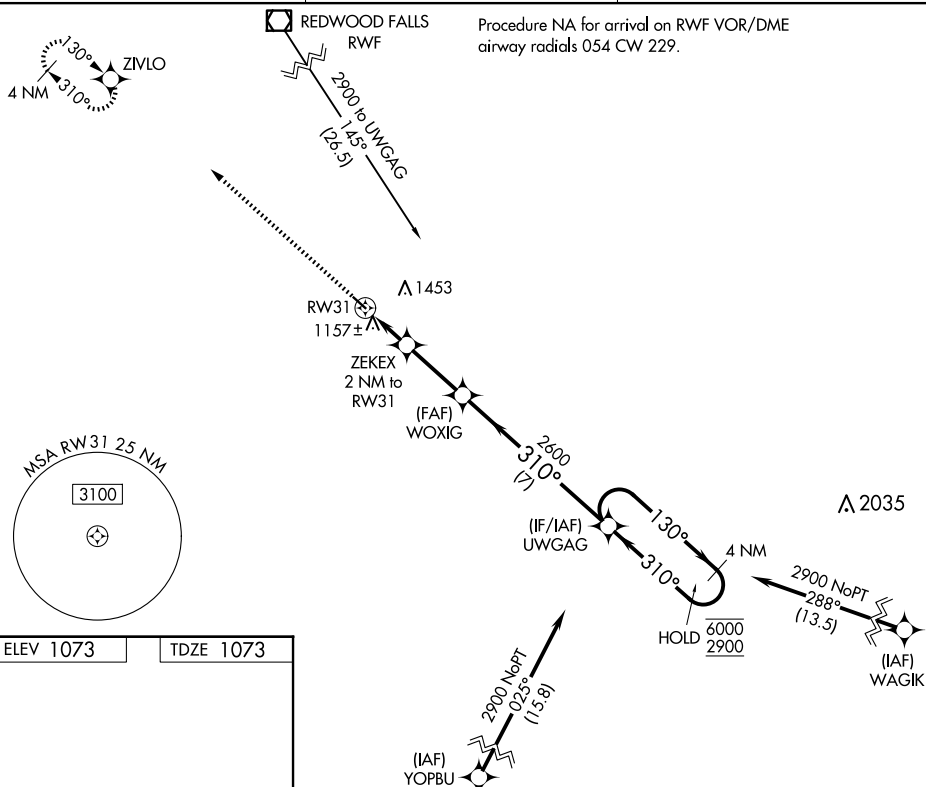


Use Redwood Falls altimeter setting.

MISSED APPROACH: Climb to 2900 direct ZIVLO and hold.

RWF ASOS
126.575

MINNEAPOLIS CENTER
127.1 290.2

UNICOM
122.8 (CTAF) **L**[illegible]