

DANVILLE, KENTUCKY

AL-6504 (FAA)

25163

WAAS CH 70506 W31A	APP CRS 305°	Rwy Ldg 5000 TDZE 1016 Apt Elev 1022
--	------------------------	---

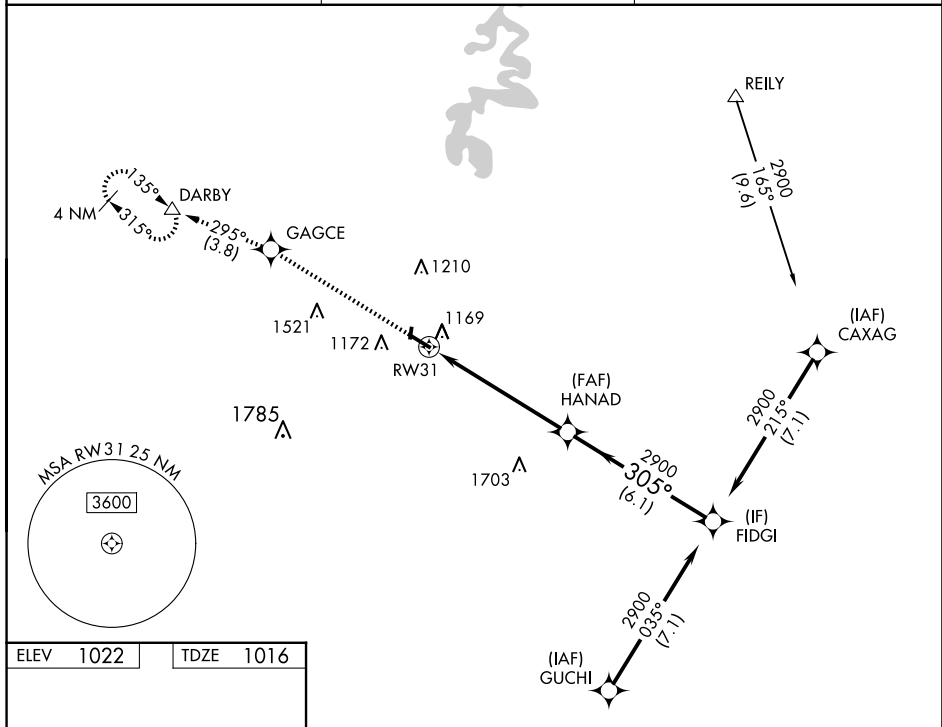
RNAV (GPS) RWY 31
STUART POWELL FLD (DVK)

RNP APCH - GPS.

T For uncompensated Baro-VNAV systems, LNAV/VNAV NA below -17° C
A or above 54° C.

MISSED APPROACH: Climb to 3000
direct GAGCE and on track 295° to
DARBY and hold.

AWOS-3 128.325	LEXINGTON APP CON 120.15 259.3	UNICOM 122.8 (CTAF) 0
--------------------------	--	---------------------------------



The diagram illustrates the RW31 runway layout. It shows a runway segment of 5000' x 75' with a 30.48' width. A 1956' x 75' segment is also indicated. A 305° bearing is shown for the runway. A 1.5 NM distance is marked from the runway end to the RW31 intersection. A 305° bearing is also shown for the intersection. The diagram includes a table with the following data:

CATEGORY	A	B	C	D
LPV DA	1216-1	200 (200-1)		
LNAV/VNAV DA	1492-1 ³ / ₈	476 (500-1 ³ / ₈)		
LNAV MDA	1520-1 504 (500-1)	1520-1 ³ / ₈ 504 (500-1 ³ / ₈)		
C CIRCLING	1520-1 498 (500-1)	1680-1 658 (700-1)	1720-2 698 (700-2)	1840-2 ³ / ₄ 818 (900-2 ³ / ₄)

DANVILLE, KENTUCKY
Amdt 1 27JAN22

37°35'N-84°46'W

STUART POWELL FLD (DVK)
RNAV (GPS) RWY 31

SE-1, 07 AUG 2025 to 04 SEP 2025

SE-1, 07 AUG 2025 to 04 SEP 2025