

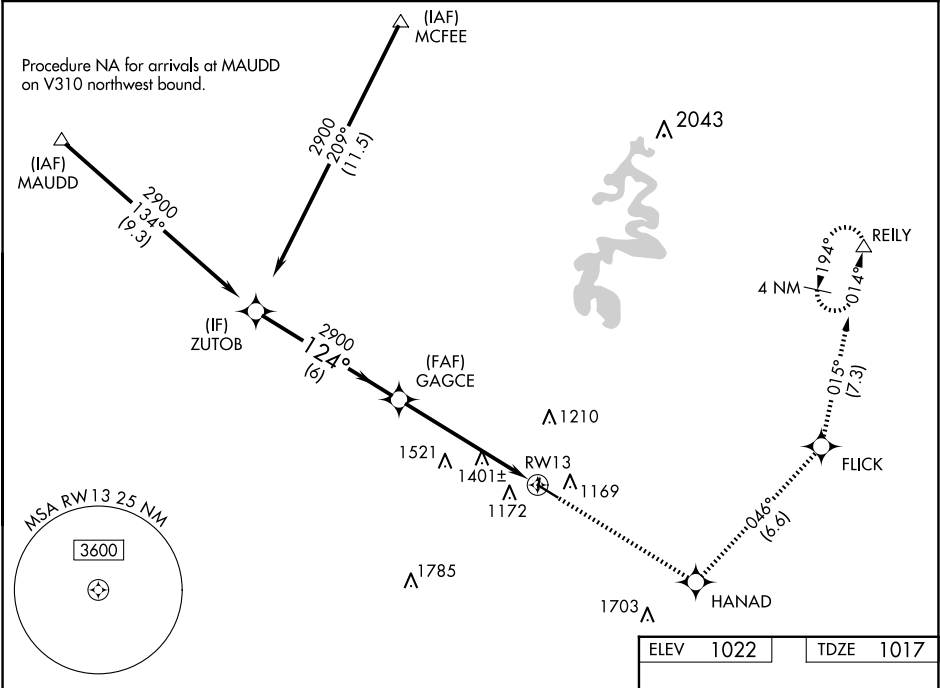
WAAS CH 93706 W13A	APP CRS 124°	Rwy Ldg TDZE 1017 Apt Elev 1022
--	------------------------	---

RNAV (GPS) RWY 13

STUART POWELL FLD (DVK)

RNP APCH - GPS.	MISSED APPROACH: Climb to 3000 direct HANAD and on track 046° to FLICK and on track 015° to REILY and hold.
▼ Rwy 13 helicopter visibility reduction below ¾ SM NA. ▲ For uncompensated Baro-VNAV systems, LNAV/VNAV NA below -17°C or above 54°C.	

AWOS-3 128.325	LEXINGTON APP CON 120.15 259.3	UNICOM 122.8 (CTAF) 0
--------------------------	--	---------------------------------



		3000 ↑		HANAD ✧		tr 046°		FLICK ✧		tr 015°		REILY △	
		ZUTOB		GAGCE									
		2900		2900		1.9 NM to RW13		RW13					
		GP 3.00° TCH 34		124°									
		6 NM		3.9 NM		1.9 NM							
CATEGORY		A		B		C		D					
LPV DA		1267-1		250 (300-1)									
LNAV/ VNAV DA		1660-1¾		643 (700-1¾)									
LNAV MDA		1660-1 643 (700-1)		1660-1¾ 643 (700-1¾)									