

LOC/DME I-PQQ	APP CRS	Rwy Ldg	5000
108.9	305°	TDZE	1016
Chan 26		Apt Elev	1022

LOC RWY 31

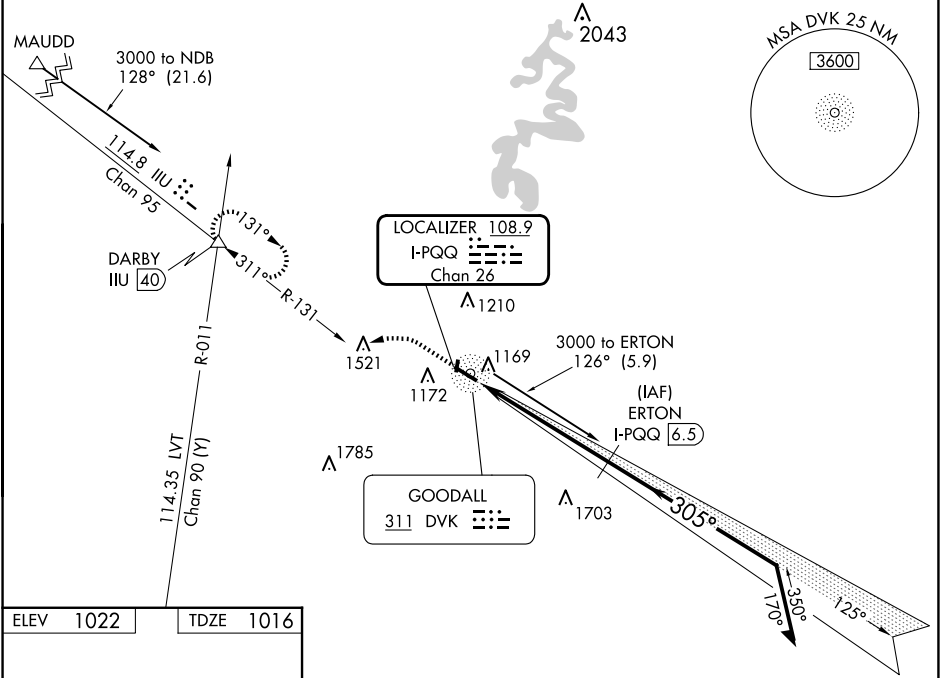
STUART POWELL FLD (DVK)

DME required.  
ADF or RADAR required for procedure entry.

MISSED APPROACH: Climb to 2000 then climbing left turn to 3000 on heading 260° and ILL VORTAC R-131 to DARBY INT and hold.



AWOS-3 128.325	LEXINGTON APP CON 120.15 259.3	UNICOM 122.8 (CTAF)
-------------------	-----------------------------------	------------------------



ELEV 1022	TDZE 1016
-----------	-----------

