

LOC I-YQ  
**111.5**  
Chan 52

APP CRS  
**285°**

Rwy Idg  
TDZE  
Apt Elev  
**963**

N/A  
N/A  
**963**

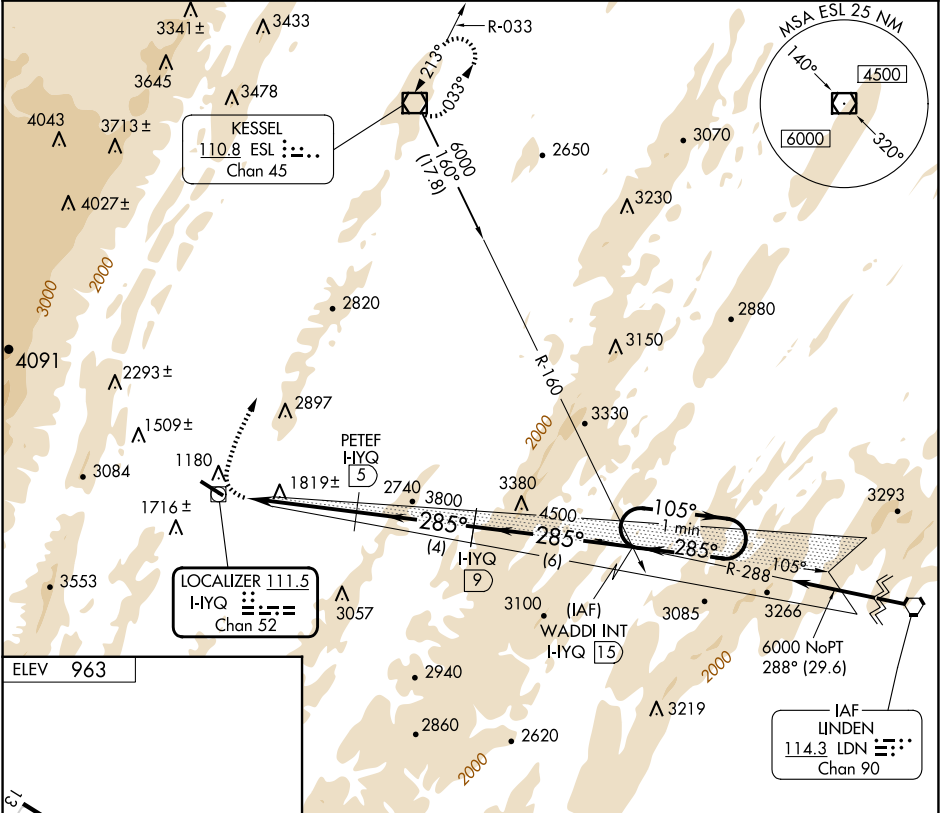
LDA/DME-B  
GRANT COUNTY (W99)

NA

-8°C

MISSED APPROACH: Climbing right turn to 5000 direct ESL VOR/DME and hold.

AWOS-3 <b>124.475</b>	WASHINGTON CENTER <b>133.55 322.55</b>	UNICOM <b>122.8 (CTAF) 0</b>
--------------------------	---	---------------------------------



ELEV 963

MIRL Rwy 13-31 0  
REIL Rwy 13 and 31 0

5000 ESL

One Minute Holding Pattern

CATEGORY	A	B	C	D
CIRCLING	2500-1¼ 1537 (1600-1¼)	2500-1½ 1537 (1600-1½)	2880-3 1917 (2000-3)	NA

NE-4, 07 AUG 2025 to 04 SEP 2025

NE-4, 07 AUG 2025 to 04 SEP 2025