

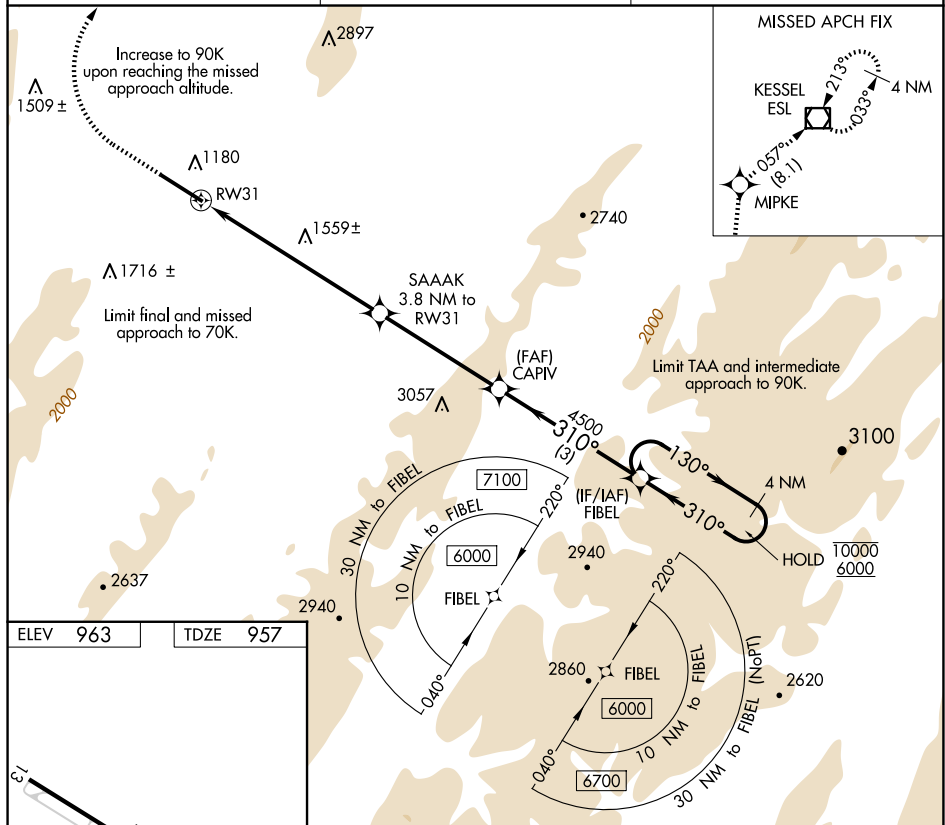
25107

# COPTER RNAV (GPS) X RWY 31

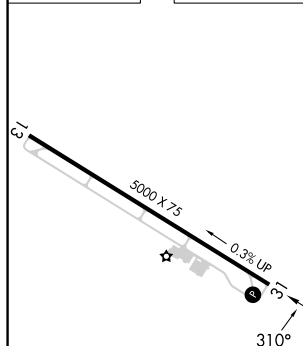
**A** NA When local altimeter setting not received, procedure NA.

**MISSED APPROACH:** Climb to 1380 then climbing right turn to 5000 direct MIPKE and on track 057° to ESL VOR/DME and hold.

AWOS-3 <b>124.475</b>	WASHINGTON CENTER <b>133.55 322.55</b>	UNICOM <b>122.8 (CTAF) 0</b>
--------------------------	---	---------------------------------



ELEV	963		TDZE	957
------	-----	--	------	-----



1380 ↑	5000 ↗	MIPKE ✦	tr 057°	ESL ◻	VGSI and descent angles not coincident (VGSI Angle 6.50/TCH 46).
					4 NM Holding Pattern
<p>1.3 NM to RW31</p> <p>3.8 NM to RW31</p> <p>5.20° HCH 46</p> <p>310°</p> <p>130°</p> <p>3080*</p> <p>4500</p> <p>10000</p> <p>6000</p> <p>1.3 NM</p> <p>2.5 NM</p> <p>2.5 NM</p> <p>3 NM</p>					
CATEGORY		COPTER			
LNAV MDA		1880- $\frac{3}{4}$ 923 (1000- $\frac{3}{4}$ )			

GRANT COUNTY (W99)

# COPTER RNAV (GPS) X RWY 31

NE-4, 07 AUG 2025 to 04 SEP 2025