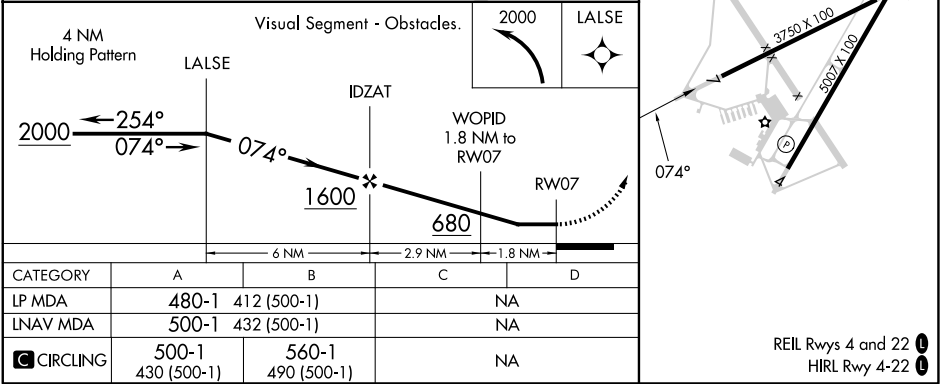
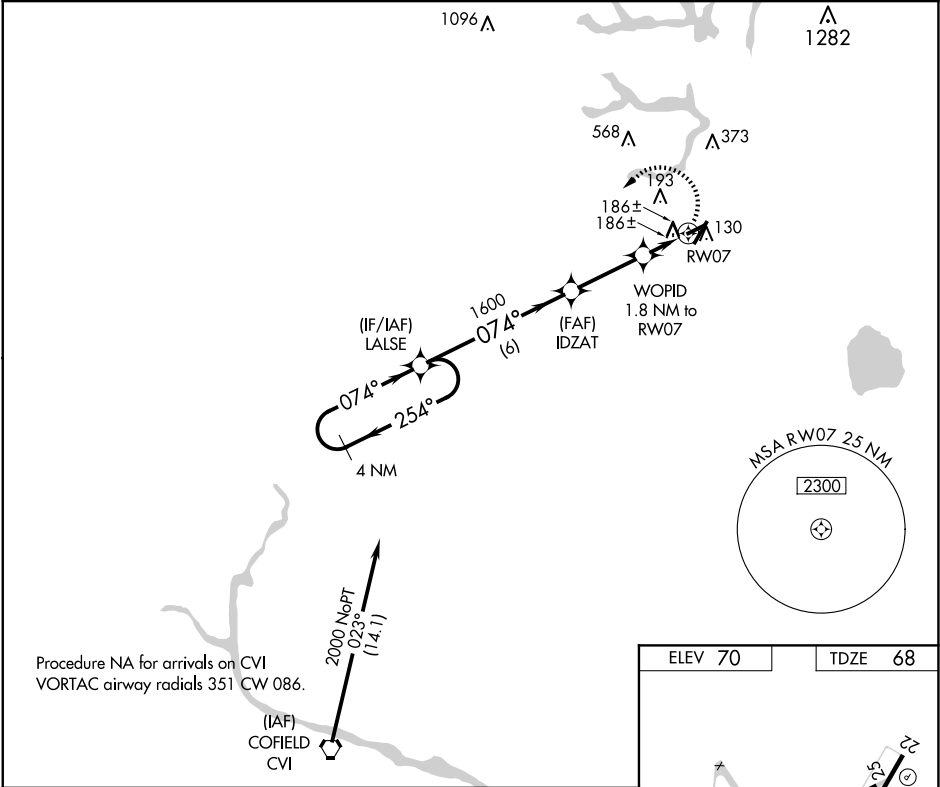


WAAS CH <b>78424</b> <b>W07A</b>	APP CRS <b>074°</b>	Rwy Idg <b>3750</b> TDZE <b>68</b> Apt Elev <b>70</b>
--	------------------------	---

RNAV (GPS) RWY 7  
SUFFOLK EXEC (SF'Q)

<p><b>▼</b> DME/DME RNP-0.3 NA. Helicopter visibility reduction below ¾ SM NA. When local altimeter setting not received, use Norfolk Intl altimeter setting and increase all MDA 60 feet.</p> <p><b>▲</b></p>	<p>MISSED APPROACH: Climbing left turn to 2000 direct LALSE and hold.</p>
--	---

AWOS-3 <b>119.375</b>	NORFOLK APP CON <b>127.9 269.425</b>	UNICOM <b>122.7 (CTAF)</b> <b>0</b>
--------------------------	---	--



NE-3, 07 AUG 2025 to 04 SEP 2025

NE-3, 07 AUG 2025 to 04 SEP 2025