

| | | |
|--|------------------------|---|
| WAAS CH 65824 W04A | APP CRS 040° | Rwy Idg 5007 TDZE 66 Apt Elev 70 |
|--|------------------------|---|

RNAV (GPS) RWY 4
SUFFOLK EXEC (SFQ)

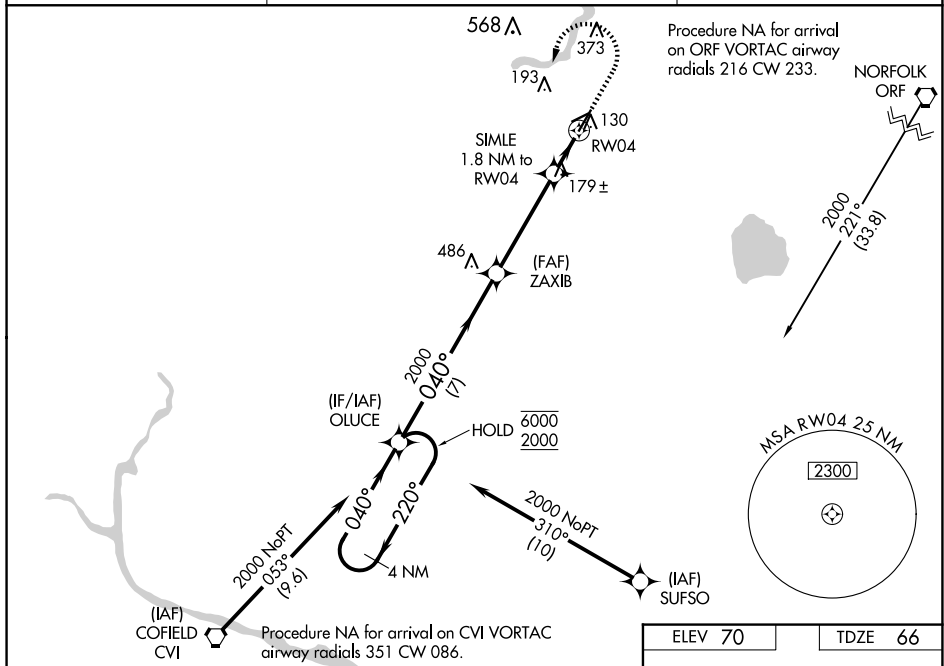
RNP APCH.



For uncompensated Baro-VNAV systems,
LNAV/VNAV NA below -15°C or above 54°C.

MISSED APPROACH:
Climb to 600 then climbing left
turn to 2000 direct OLUCE and hold.

| | | |
|--------------------------|---|---------------------------------|
| AWOS-3 119.375 | NORFOLK APP CON 127.9 269.425 | UNICOM 122.7 (CTAF) 0 |
|--------------------------|---|---------------------------------|



VGSI and RNAV glidepath not coincident (VGSI Angle 3.00/TCH 39).

4 NM Holding Pattern

OLUCE

ZAXIB

2000

2000

6000 ← 220°

2000 ← 040°

GP 3.00° TCH 45

SIMLE 1.8 NM to RW04

*1.1 NM to RW04

*680

RW04

*LNAV only.

| CATEGORY | A | B | C | D |
|-------------------|----------------------|----------------------|---|----------------------|
| LPV DA | | 322- $\frac{7}{8}$ | 256 (300- $\frac{7}{8}$) | |
| LNAV/VNAV DA | | 474-1 $\frac{3}{8}$ | 408 (500-1 $\frac{3}{8}$) | |
| LNAV MDA | | 440-1 | 374 (400-1) | |
| C CIRCLING | 500-1 430 (500-1) | 560-1 490 (500-1) | 680-1 $\frac{3}{4}$ 610 (700-1 $\frac{3}{4}$) | 680-2 610 (700-2) |

