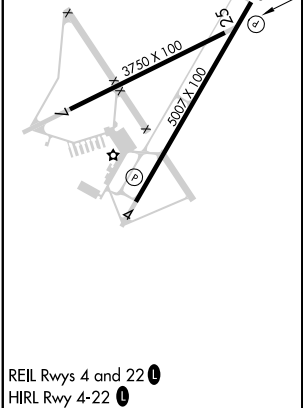
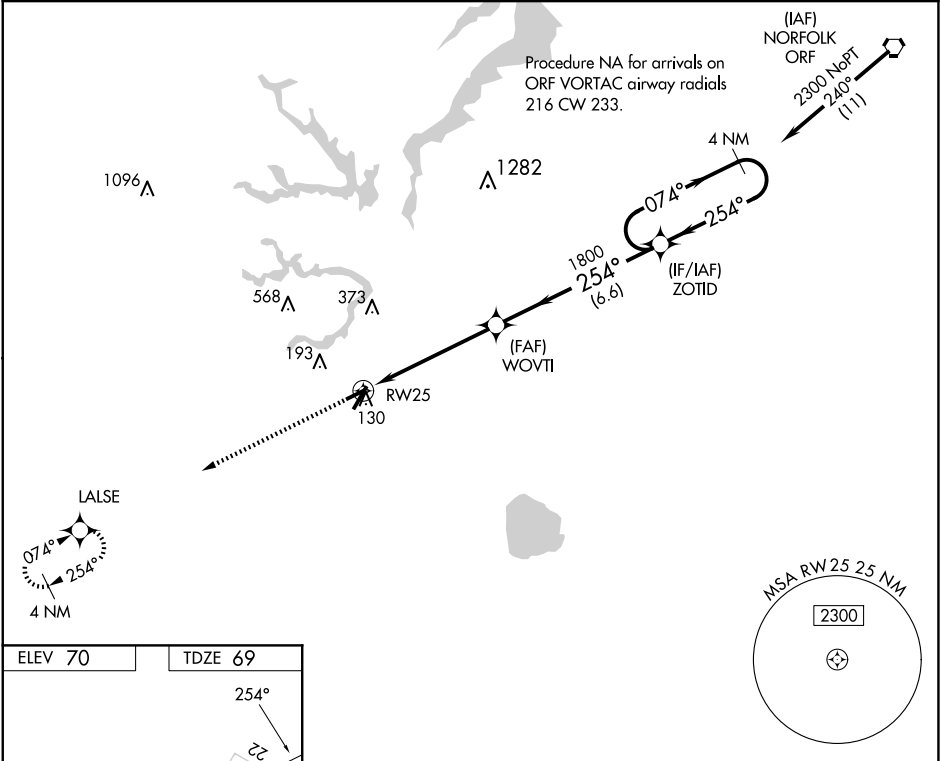




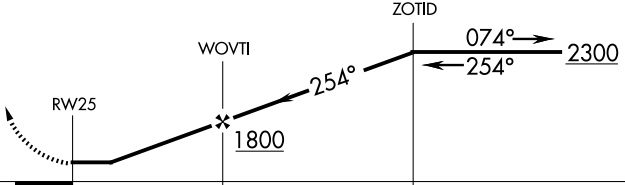

APP CRS	Rwy Idg	3750
254°	TDZE	69
	Apt Elev	70

RNAV (GPS) RWY 25  
SUFFOLK EXEC (SF'Q)

<p><b>⚠</b> DME/DME RNP-0.3 NA. Helicopter visibility reduction below 1 SM NA. When local altimeter setting not received, use Norfolk Intl altimeter setting and increase all MDA 60 feet.</p>	<p>MISSED APPROACH: Climb to 2000 direct LALSE and hold.</p>
--	--

AWOS-3 119.375	NORFOLK APP CON 127.9 269.425	UNICOM 122.7 (CTAF) <b>0</b>
-------------------	----------------------------------	---------------------------------



2000	LALSE	Visual Segment - Obstacles.	4 NM Holding Pattern	
				
CATEGORY	A	B	C	D
LNAV MDA	480-1	411 (500-1)	NA	
 CIRCLING	500-1 430 (500-1)	560-1 490 (500-1)	NA	

SUFFOLK, VIRGINIA  
Amdt 1B 02MAR17

36°41'N-76°36'W

SUFFOLK EXEC (SF'Q)  
RNAV (GPS) RWY 25

NE-3, 07 AUG 2025 to 04 SEP 2025

NE-3, 07 AUG 2025 to 04 SEP 2025