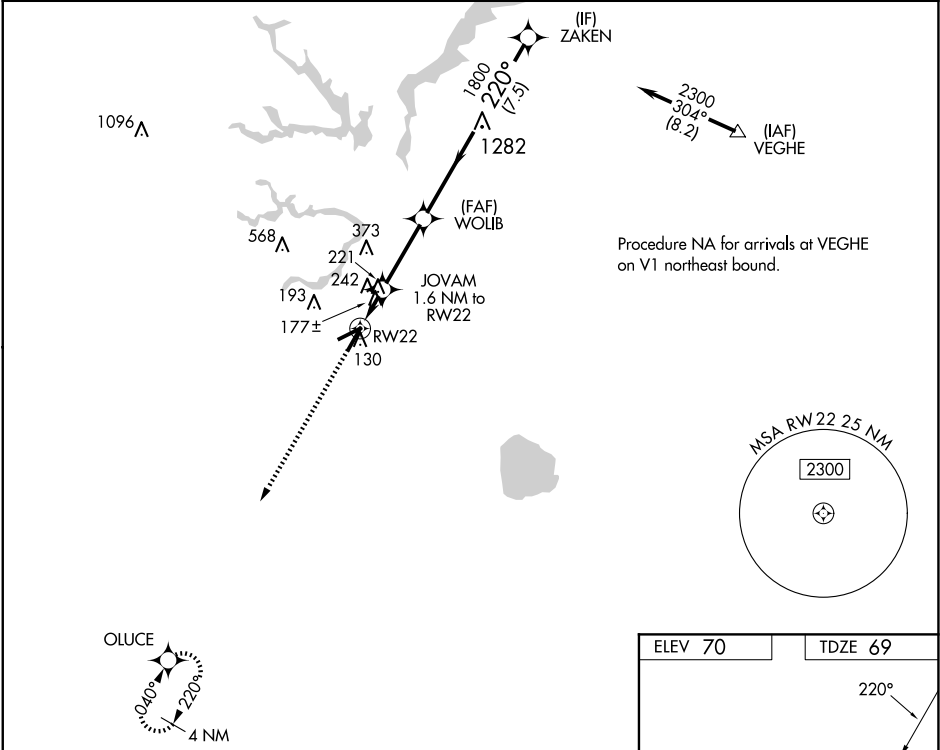




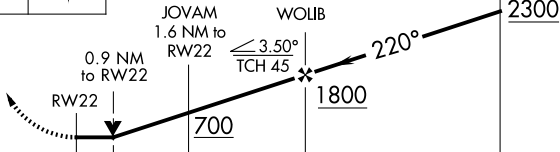

WAAS CH 99325 W22A	APP CRS 220°	Rwy Idg 5007 TDZE 69 Apt Elev 70
--	------------------------	---

RNAV (GPS) RWY 22
SUFFOLK EXEC (SF'Q)

<p>⚠ DME/DME RNP-0.3 NA. Helicopter visibility reduction below ¾ SM NA. VDP NA with Norfolk Intl altimeter setting. When local altimeter setting not received, use Norfolk Intl altimeter setting and increase all MDA 60 feet, and increase LP Cats C and D visibility ¼ mile and LNAV Cats C and D visibility ½ mile.</p>	<p>MISSED APPROACH: Climb to 2000 direct OLUCE and hold.</p>
--	--

AWOS-3 119.375	NORFOLK APP CON 127.9 269.425	UNICOM 122.7 (CTAF) 0
--------------------------	---	---------------------------------



2000	OLUCE				
					
					
CATEGORY	A	B	C	D	
LP MDA	440-1 371 (400-1)				
LNAV MDA	500-1	431 (500-1)	500-1¼	431 (500-1¼)	
 CIRCLING	500-1 430 (500-1)	560-1 490 (500-1)	680-1¾ 610 (700-1¾)	680-2 610 (700-2)	

