

LOC/DME I-RKH <b>109.95</b> Chan <b>36</b> (Y)	APP CRS <b>040°</b>	Rwy Idg <b>5007</b> TDZE <b>66</b> Apt Elev <b>70</b>
--	------------------------	---

LOC RWY 4  
SUFFOLK EXEC (SFQ)

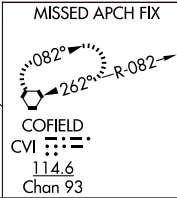
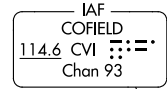
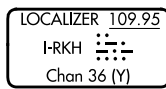
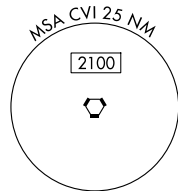


**MISSED APPROACH:** Climb to 600 then climbing left turn to 2000 direct CVI VORTAC and hold.

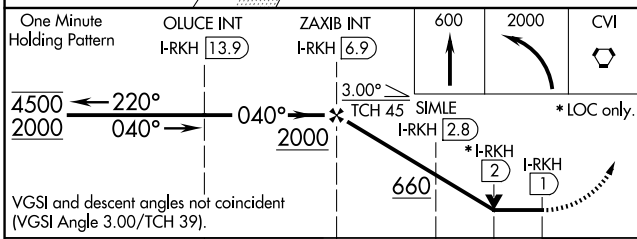
AWOS-3  
119.375

NORFOLK APP CON  
127.9 269.425

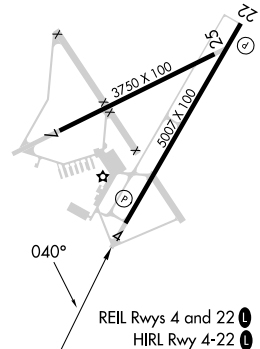
UNICOM  
122.7 (CTAF) **L**



ELEV	70		TDZE	66
------	----	--	------	----



CATEGORY	A	B	C	D
S-4	660-1	594 (600-1)	660-1 <sup>3</sup> / <sub>4</sub>	594 (600-1 <sup>3</sup> / <sub>4</sub> )
<b>C</b> CIRCLING	660-1	590 (600-1)	680-1 <sup>3</sup> / <sub>4</sub> 610 (700-1 <sup>3</sup> / <sub>4</sub> )	680-2 610 (700-2)
SIMLE FIX MINIMUMS (DME REQUIRED)				
S-4	440-1 374 (400-1)			
<b>C</b> CIRCLING	500-1 430 (500-1)	560-1 490 (500-1)	680-1 <sup>3</sup> / <sub>4</sub> 610 (700-1 <sup>3</sup> / <sub>4</sub> )	680-2 610 (700-2)



FAF to MAP 5.9 NM					
Knots	60	90	120	150	180
Min:Sec	5:54	3:56	2:57	2:22	1:58