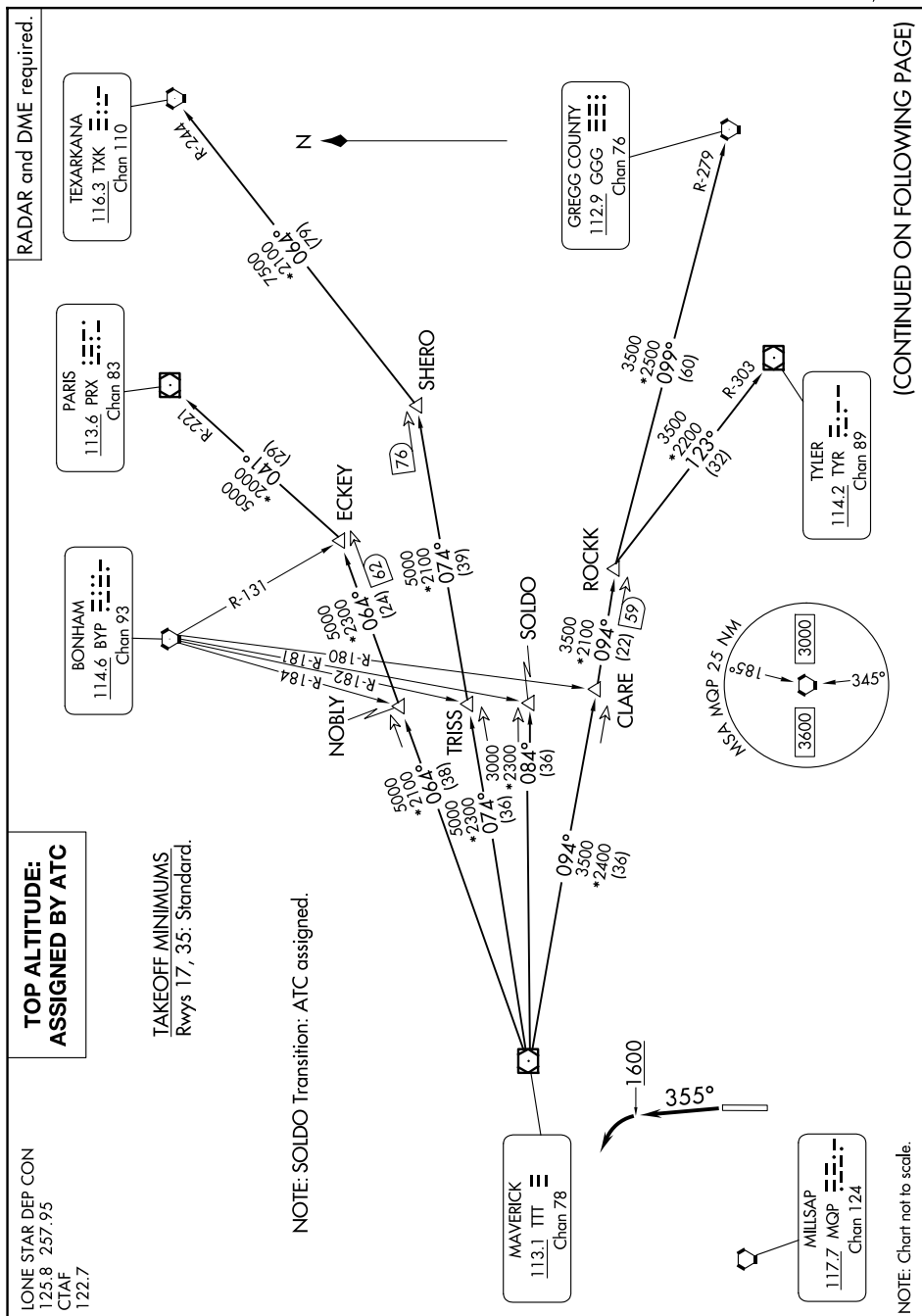


GARLAND SIX DEPARTURE



**TOP ALTITUDE:
ASSIGNED BY ATC**

CTAF
122.7

TAKEOFF MINIMUMS
Rwys 17, 35: Standard.

NOTE: SOLDO Transition: ATC assigned.

NOTE: Chart not to scale.

(CONTINUED ON FOLLOWING PAGE)