

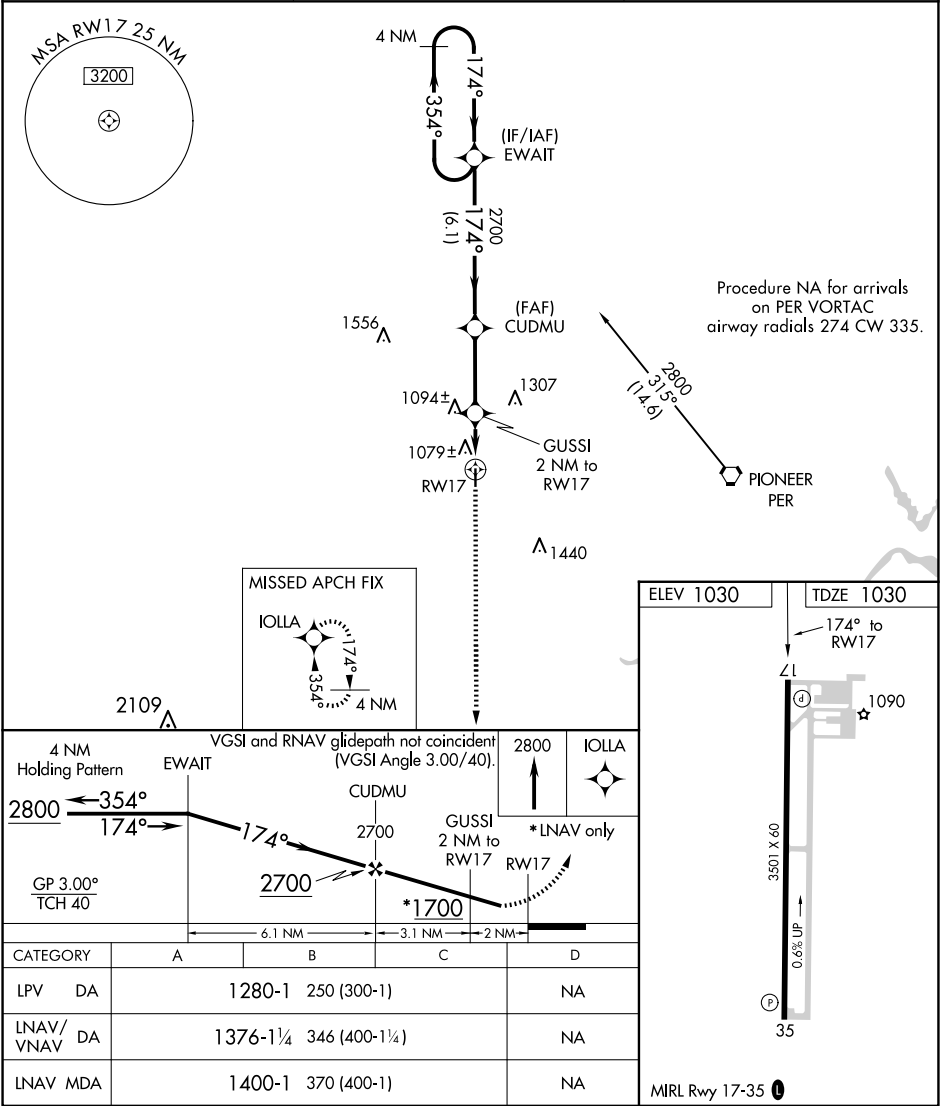
WAAS CH <b>97519</b> <b>W17A</b>	APP CRS <b>174°</b>	Rwy Idg TDZE Apt Elev	<b>3501</b> <b>1030</b> <b>1030</b>
--	------------------------	-----------------------------	---

RNAV (GPS) RWY 17

BLACKWELL-TONKAWA MUNI (BKN)

RNP APCH. ▼ ▲ For uncompensated Baro-VNAV systems, LNAV/VNAV NA below -17°C or above 54°C. Rwy 17 helicopter visibility reduction below ¾ SM NA. When local altimeter setting not received, use Ponca City altimeter setting and increase all DA 31 feet and all MDA 40 feet and LNAV Cat C visibility ¼ mile. Baro-VNAV NA when using Ponca City altimeter setting.	MISSED APPROACH: Climb to 2800 direct IOLLA and hold.
---	---

AWOS-3PT <b>120.575</b>	KANSAS CITY CENTER <b>127.8 319.1</b>	UNICOM <b>122.8 (CTAF) 0</b>
----------------------------	--	---------------------------------



SC-1, 07 AUG 2025 to 04 SEP 2025

SC-1, 07 AUG 2025 to 04 SEP 2025