

SW-4, 07 AUG 2025 to 04 SEP 2025

ATIS  
128.325  
GND CON  
124.4  
CHANDLER TOWER ★  
126.1 (Rwy 4L-22R)  
133.1 (Rwy 4R-22L)  
PHOENIX DEP CON  
123.7 363.0

NOTE: RNAV 1.  
NOTE: Turbojets and turboprops only.  
NOTE: RADAR required.  
NOTE: GPS required.  
NOTE: SJN TRANSITION for ABQ terminal arrivals only.  
NOTE: MAXXO TRANSITION ATC assigned only.  
NOTE: Aircraft filing over DEN, RSK, ALS, and points north of ALS, file YOTES DEPARTURE.  
NOTE: Aircraft filing over ABQ, CIM, FTI, and GCK, file LALUZ DEPARTURE.  
NOTE: Aircraft filing over ACH, LBL, ONM, CNX, PNH, MMB, TCC, IRW and TXO, file FTHLS DEPARTURE.  
NOTE: Aircraft departing KGEU and KGYR ATC assigned only.

TAKEOFF MINIMUMS

Rwys 4L/R, 22L/R: Standard.



TOP ALTITUDE:  
ASSIGNED BY ATC

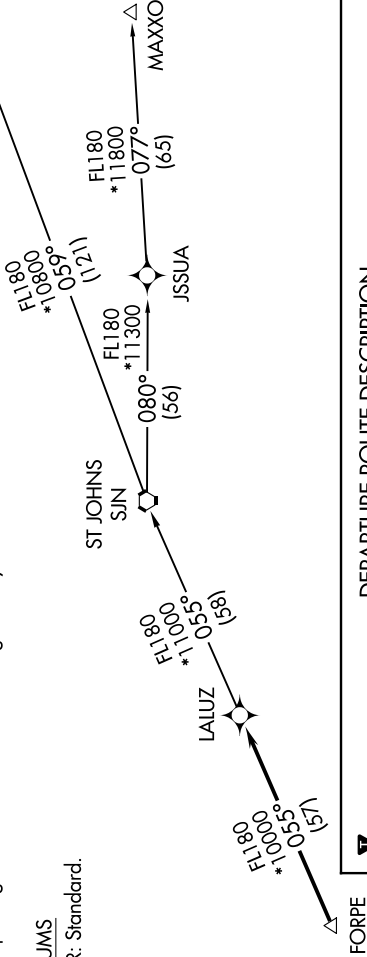
ALBUQUERQUE  
ABQ

ALBUQUERQUE  
ABQ

ALBUQUERQUE  
ABQ

ALBUQUERQUE  
ABQ

ALBUQUERQUE  
ABQ



FORPE

DEPARTURE ROUTE DESCRIPTION

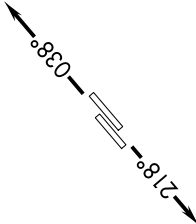
TAKEOFF RUNWAYS 4L/R: Climb heading 038° or as assigned by ATC, thence. . . .  
TAKEOFF RUNWAYS 22L/R: Climb heading 218° or as assigned by ATC, thence. . . .  
... expect RADAR vectors to FORPE, then on track 055° to LALUZ, then on (transition).  
Maintain ATC assigned altitude, expect filed altitude 3 minutes after departure.

ALBUQUERQUE TRANSITION (LALUZ6.ABQ)

MAXXO TRANSITION (LALUZ6.MAXXO)

ST JOHNS TRANSITION (LALUZ6.SJN)

NOTE: Chart not to scale.



SW-4, 07 AUG 2025 to 04 SEP 2025