

IZZZO EIGHT DEPARTURE (RNAV)

CHANDLER MUNI (CHD)
CHANDLER, ARIZONA

AL-6494 (FAA)

RNAV 1 - GPS.

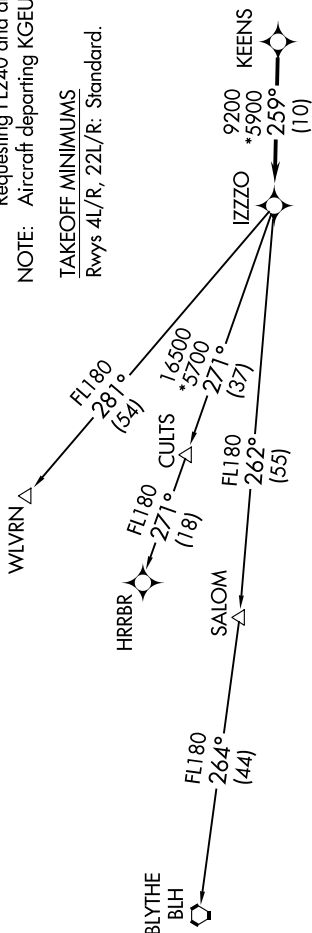
RADAR required.

**TOP ALTITUDE:
ASSIGNED BY ATC**

PHOENIX DEP CON
123.7 363.0
ATIS
128.325
GND CON
124.4
CHANDLER TOWER*
126.1 (Rwy 4L-22R)
133.1 (Rwy 4R-22L)

Turbojets and turboprops only.
NOTE: Aircraft requesting FL220 and below must file BLYTHE Transition.
NOTE: Turbojets landing LAX, file WLVRN Transition.
NOTE: Aircraft landing other than LAX and turboprops landing at LAX: Requesting FL240 and above, file HRRBR Transition.
NOTE: Aircraft departing KGEU and KGVR ATC assigned only.

TAKEOFF MINIMUMS
Rwys 4L/R, 22L/R: Standard.



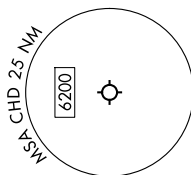
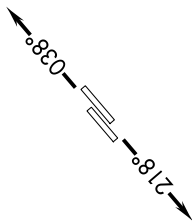
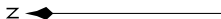
DEPARTURE ROUTE DESCRIPTION

TAKEOFF RUNWAYS 4L/R: Climb on track 038° or as assigned by ATC, thence. . . .
TAKEOFF RUNWAYS 22L/R: Climb on track 218° or as assigned by ATC, thence. . . .
. . . . for RADAR vectors to KEENS, then on track 259° to IZZO, then on (transition).
Maintain ATC assigned altitude. expect filed altitude 3 minutes after departure.

BLYTHE TRANSITION (JZZO8.BLH)

HRRBR TRANSITION (IZZ08.HRRBR)

WLV RN TRANSITION (IZZ ZO8.WLV RN)



NOTE: Chart not to scale.

SW-4, 07 AUG 2025 to 04 SEP 2025

IZZZO EIGHT DEPARTURE (RNAV)

(IZZO8.IZZO) 25JAN24

CHANDLER, ARIZONA
CHANDLER MUNI (CHD)