

WAAS CH 82515 W31A	APP CRS 314°	Rwy Idg TDZE 837 Apt Elev 841	4012
--	------------------------	---	-------------

RNAV (GPS) RWY 31

OSKALOOSA MUNI (00A)

RNP APCH.

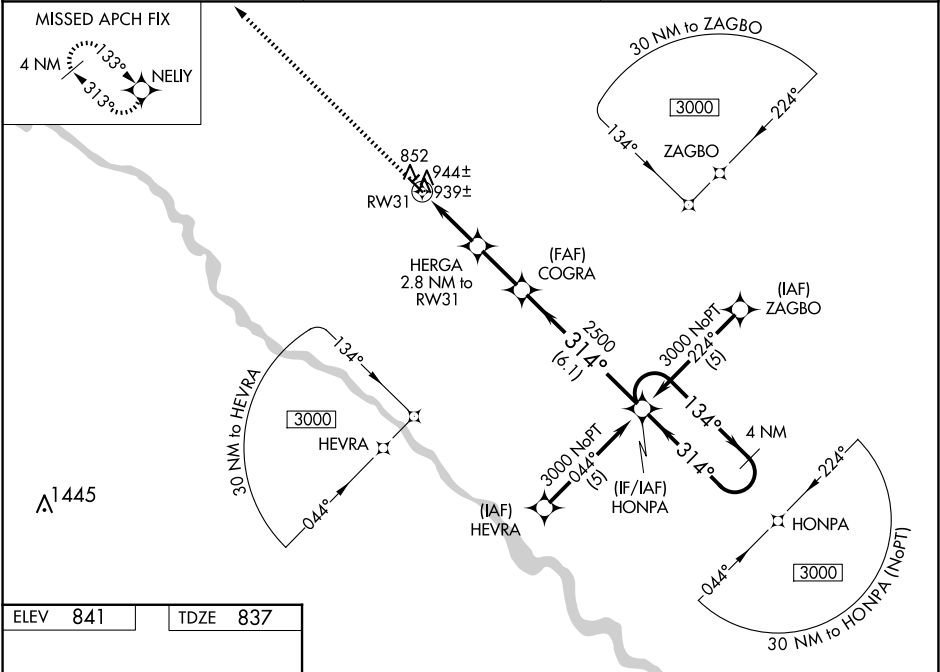
▼

⚠

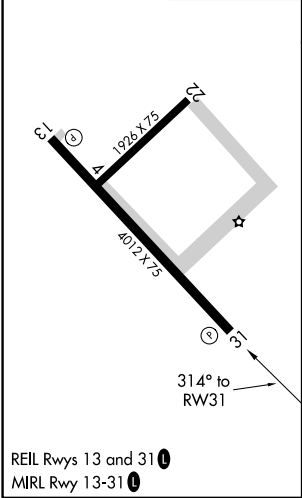
When local altimeter setting not received, use Ottumwa altimeter setting and increase all DA 18 feet and all MDA 20 feet and increase LNAV/VNAV all Cats visibility ¼ mile. Baro-VNAV and VDP NA when using Ottumwa altimeter setting. For uncompensated Baro-VNAV systems, LNAV/VNAV NA below -1.6°C (4°F) or above 54°C (130°F).

MISSED APPROACH: Climb to 3000 direct NELLY and hold.

AWOS-3 118.625	CHICAGO CENTER 118.15 335.575	UNICOM 122.8 (CTAF) 0
--------------------------	---	---------------------------------



ELEV 841	TDZE 837
-----------------	-----------------



3000	NELLY	VGSI and RNAV glidepath not coincident (VGSI Angle 3.00/TCH 22).	HONPA	4 NM Holding Pattern
*LNAV Only	HERGA 2.8 NM to RW31	COGRA	134°	3000
1.1 NM to RW31	1760	2500	314°	GP 3.00° TCH 40
1.1	1.7	2.2 NM	6.1 NM	
CATEGORY	A	B	C	D
LPV DA	1187-1¼	350 (400-1¼)		NA
LNAV/VNAV DA	1209-1¼	372 (400-1¼)		NA
LNAV MDA	1200-1	363 (400-1)		NA
CIRCLING	1260-1 419 (500-1)	1300-1 459 (500-1)	1300-1½ 459 (500-1½)	NA

NC-3, 07 AUG 2025 to 04 SEP 2025

NC-3, 07 AUG 2025 to 04 SEP 2025