

WAAS CH <b>99717</b> <b>W36A</b>	APP CRS <b>360°</b>	Rwy Idg <b>5500</b> TDZE <b>1228</b> Apt Elev <b>1269</b>
--	------------------------	---

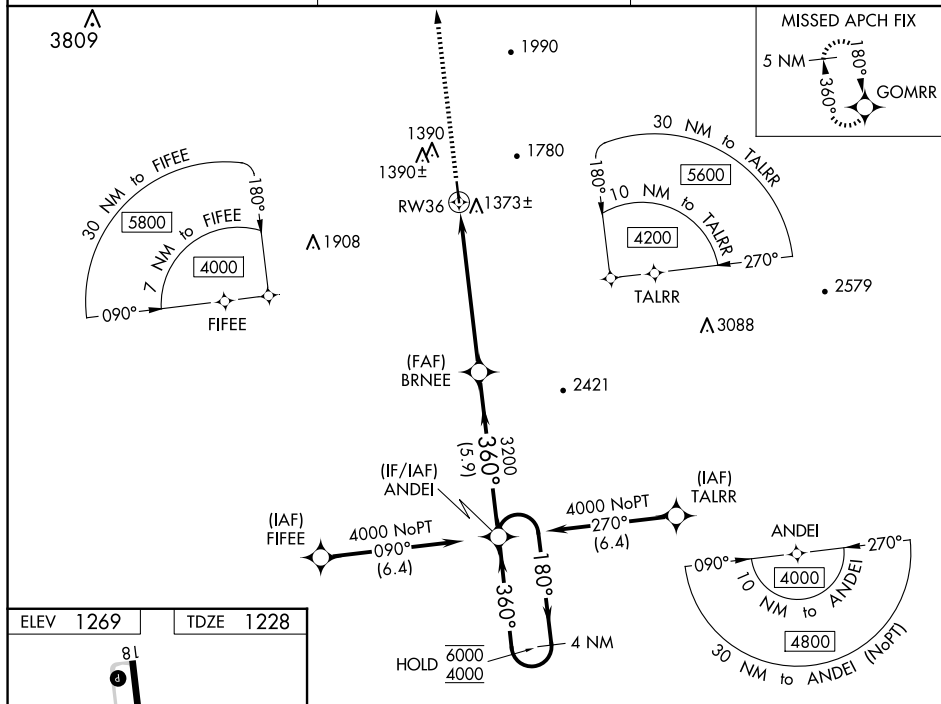
RNAV (GPS) RWY 36  
MOUNT AIRY/SURRY COUNTY (MWK)

RNP APCH.

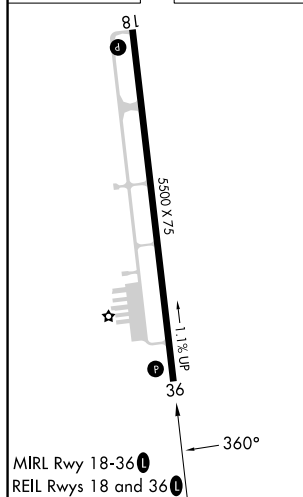
**T** Rwy 36 helicopter visibility reduction below  $\frac{3}{4}$  SM NA.  
**A** For uncompensated Baro-VNAV systems, LNAV/VNAV NA below -17°C or above 54°C.

**MISSED APPROACH:** Climb to 5000 direct GOMRR and hold.

AWOS-3 <b>121.125</b>	GREENSBORO APP CON <b>124.35 269.225</b>	UNICOM <b>123.0 (CTAF) 0</b>
--------------------------	---	---------------------------------



ELEV 1269		TDZE 1228
-----------	--	-----------



**GOMRR**

\*LNAV only.

RW36

BRNEE 3200

ANDEI

4 NM Holding Pattern

180° → 6000  
← 360° 4000

GP 3.00°  
TCH 40

CATEGORY	A	B	C	D
LPV DA	1527-1 299 (300-1)			
LNAV/VNAV DA	1637-1½ 409 (400-1½)			
LNAV MDA	1640-1	412 (400-1)	1640-1½	412 (400-1½)
<b>C</b> CIRCLING	1940-1 671 (700-1)	2040-1 771 (800-1)	2180-2¾ 911 (1000-2¾)	2340-3 1071 (1100-3)

## RNAV (GPS) RWY 36