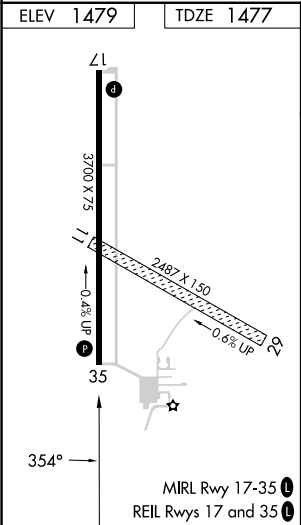
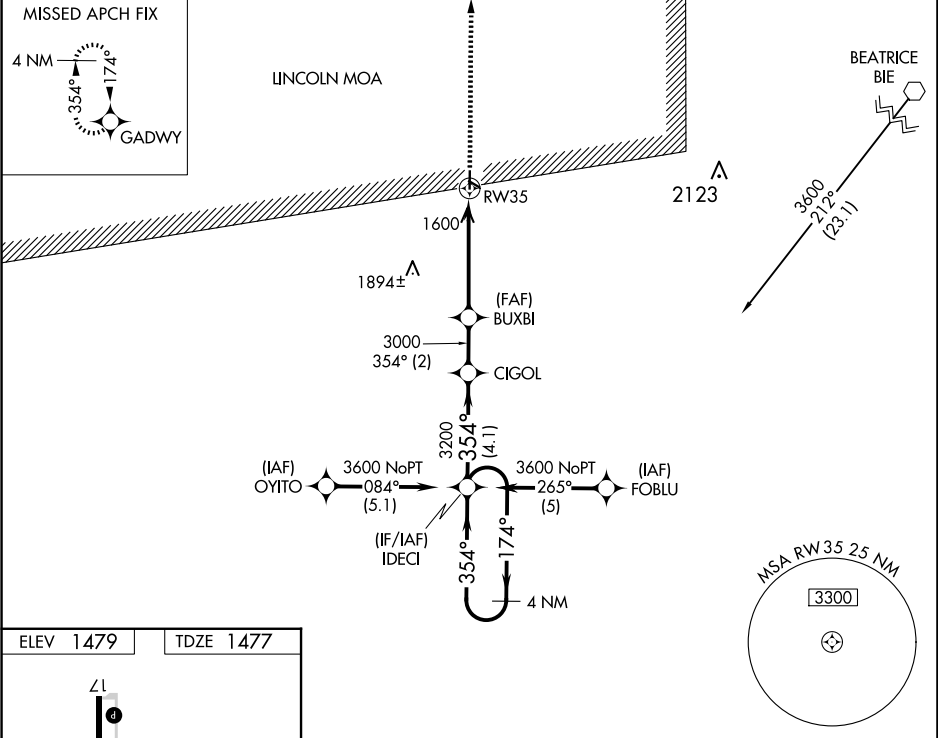


WAAS CH <b>65808</b> <b>W35A</b>	APP CRS <b>354°</b>	Rwy Idg TDZE <b>1477</b> Apt Elev <b>1479</b>
--	------------------------	---

RNAV (GPS) RWY 35

FAIRBURY MUNI (F'BY)

RNP APCH. ▼ Use Hebron altimeter setting; when not received, use Beatrice altimeter setting: ▲ NA increase LPV DA to 1796 feet and all visibilities ¼ SM; increase all MDAs 40 feet. Circling NA to Rwys 11 and 29.		MISSED APPROACH: Climb to 4000 direct GADWY and hold.
HJH AWOS-3 <b>118.525</b>	MINNEAPOLIS CENTER <b>126.4 317.7</b>	UNICOM <b>122.7 (CTAF) 0</b>



4 NM Holding Pattern		IDECI	CIGOL	BUXBI	RW35
3600		174°	354°	354°	
GP 3.00°			3200	3000	
TCH 40					
		4.1 NM	2 NM	4.6 NM	
CATEGORY	A	B	C	D	
LPV DA	1773-1	296 (300-1)		NA	
LNAV MDA	1900-1	423 (500-1)		NA	
CIRCLING	1960-1	481 (500-1)		NA	