

RNP APCH.

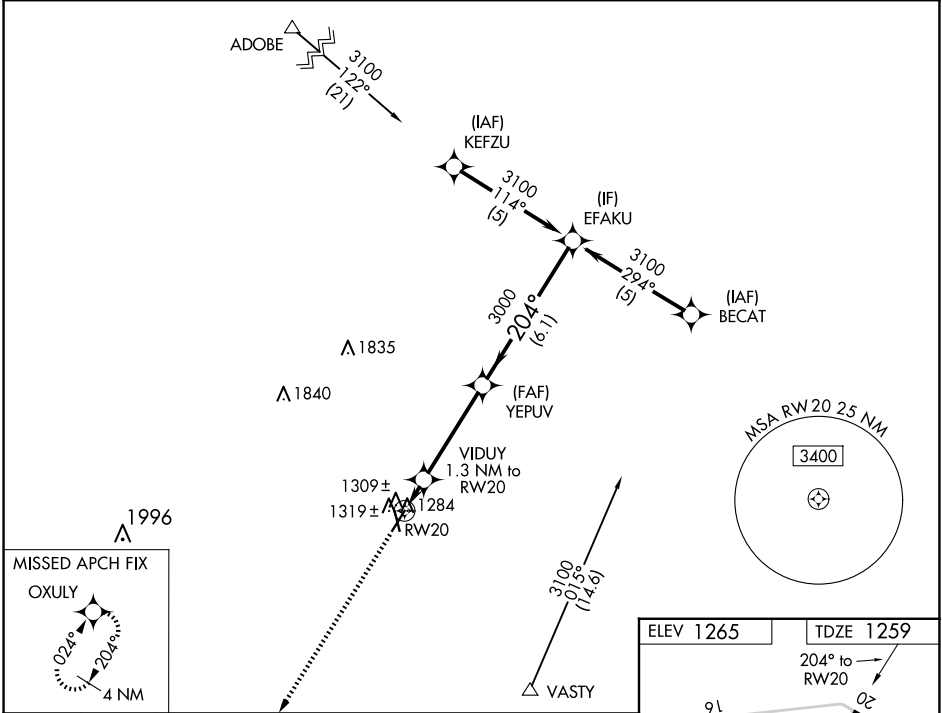
▼

▲

Baro-VNAV NA when using Frederick altimeter setting. For uncompensated Baro-VNAV systems, LNAV/VNAV NA below -17°C or above 54°C. Rwy 20 helicopter visibility reduction below ¾ SM NA. When local altimeter setting not received, use Frederick altimeter setting: increase all DA/MDA 40 feet.

MISSED APPROACH:  
Climb to 3300 direct OXULY and hold.

AWOS-3 <b>118.525</b>	ALTUS APP CON ★ <b>125.1 353.7</b>	UNICOM <b>122.8 (CTAF) 0</b>
--------------------------	---------------------------------------	---------------------------------



3300	OXULY	VGSI and RNAV glidepath not coincident (VGSI Angle 3.00°/TCH 25°).		
*LNAV only		VIDUY 1.3 NM to RW20	YEPUV 3000	EFAKU 3100
		1700*	3000	Procedure Turn NA
		1.3 NM	4 NM	GP 3.00° TCH 40
CATEGORY		A	B	C
LPV DA		1509-1	250 (300-1)	NA
LNAV/VNAV DA		1585-1¼	326 (400-1¼)	NA
LNAV MDA		1580-1	321 (400-1)	NA
CIRCLING		1660-1 395 (400-1)	1720-1 455 (500-1)	1800-1½ 535 (600-1½)

