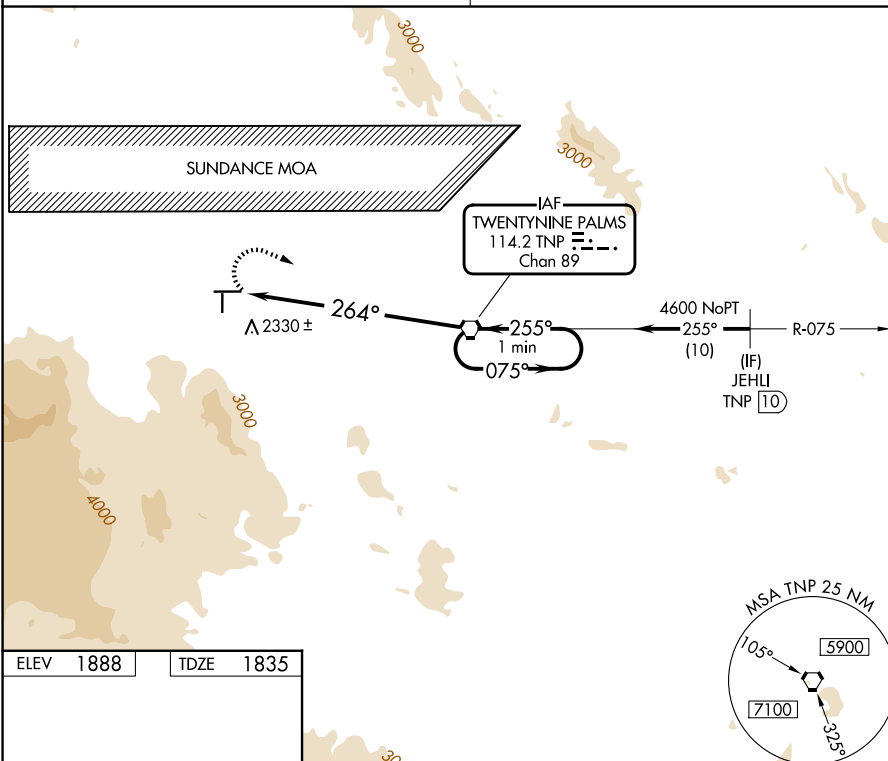


VOR RWY 26
TWENTYNINE PALMS (TNP)

MISSED APPROACH: Climbing right turn to 5900 direct TNP VORTAC and hold, continue climb-in-hold to 5900.

AUNICOM
122.8 (CTAF) **L**



ELEV 1888

TDZE 1835

REIL Rwy 8 and 26

MIRL Rwy 8-26 and 17-35

FAF to MAP 8.3 NM

	60	90	120	150	180
Knots	60	90	120	150	180
Min:Sec	8:18	5:32	4:09	3:19	2:46

34°08'N-115°57'W

TWENTYNINE PALMS (TNP)
VOR RWY 26