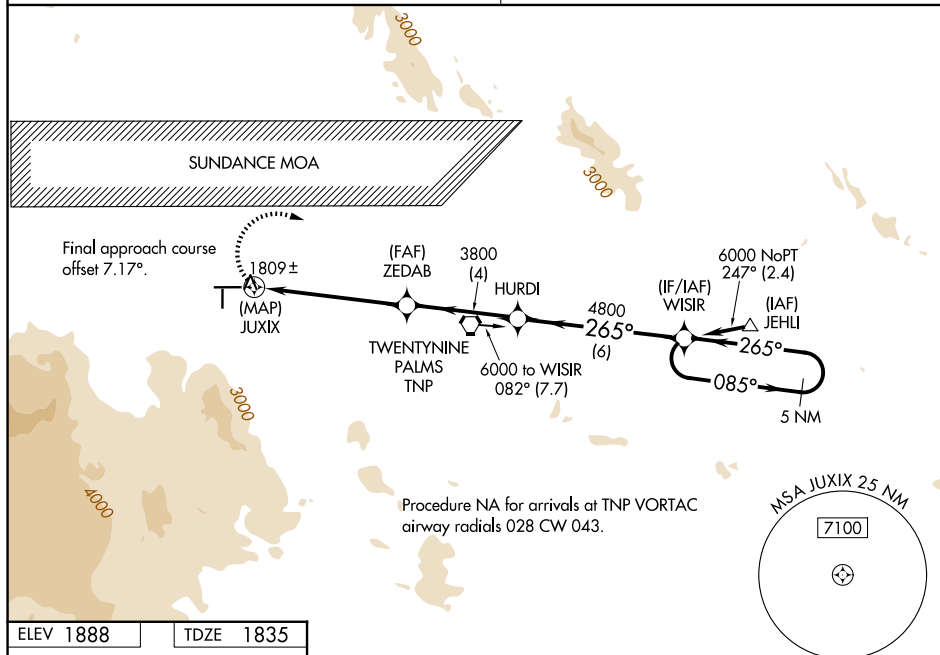


RNAV (GPS) RWY 26  
TWENTYNINE PALMS (TNP)

**T** Use PSP altimeter setting; when not received, procedure NA. Circling NA  
**A** NA south of Rwy 8-26. Circling Rwy 8, 17 NA at night.  
 \*Missed approach requires minimum climb of 425 feet per NM to 3900.

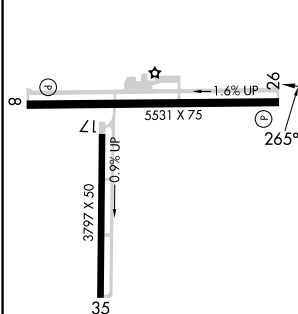
**MISSED APPROACH:** Climbing right turn to 6000 direct WISIR and hold.

AUNICOM  
122.8 (CTAF) **L**



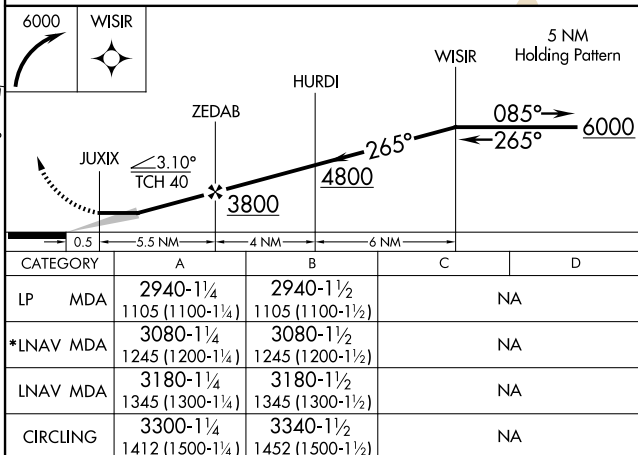
Procedure NA for arrivals at TNP VORTAC  
airway radials 028 CW 043.

TDZE 1835



REIL Rwy 8 and 26 L

MIRI Rwy 8-26 and 17-35 L



Amdt 2C 20FEB25

34°08'N-115°57'W

TWENTYNINE PALMS (TNP)  
RNAV (GPS) RWY 26

SW-3, 07 AUG 2025 to 04 SEP 2025