

WAAS CH 78222 W05A	APP CRS 048°	Rwy Idg TDZE 18 Apt Elev 19
--	------------------------	---

RNAV (GPS) RWY 5

CHESAPEAKE RGNL (CPK)

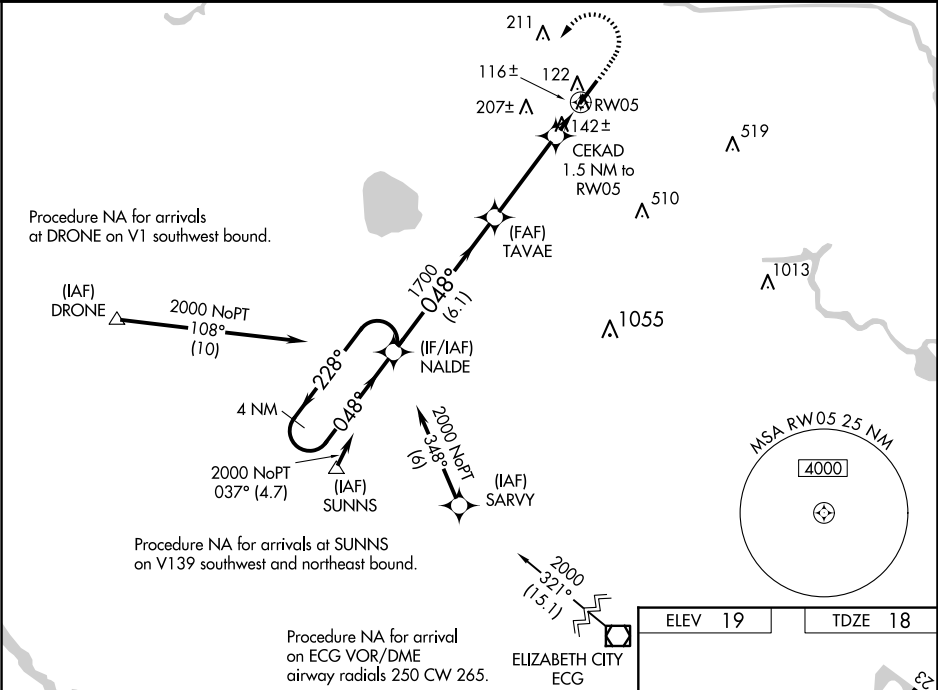
RNP APCH.

▼ When local altimeter setting not received, use Norfolk Intl altimeter setting and increase all DA 36 feet and all MDA 40 feet; increase LNAV Cats C and D visibility ⅓ mile. Baro-VNAV NA when using Norfolk Intl altimeter setting. For uncompensated Baro-VNAV systems, LNAV/VNAV NA below -1.5°C (5°F) or above 43°C (109°F). For inoperative MALSR, increase LNAV/VNAV all Cats visibility to ⅓ mile.

MALSR

MISSED APPROACH:
Climb to 500 then climbing left turn to 2300 direct NALDE and hold.

AWOS-3 123.675	NORFOLK APP CON 118.9 353.7	GCO 135.075	UNICOM 123.075 (CTAF) 0
--------------------------	---------------------------------------	-----------------------	-----------------------------------



4 NM Holding Pattern		VGSI and RNAV glidepath not coincident (VGSI Angle 3.00/TCH 43).		500	2300	NALDE
NALDE		TAVAE		1700	CEKAD 1.5 NM to RW05	*LNAV only
2000 ← 228° 048° →		1700		*520		
GP 3.00° TCH 43		6.1 NM		3.7 NM		
1.5 NM		RW05				
CATEGORY	A	B	C	D		
LPV DA		218-½	200 (200-½)			
LNAV/VNAV DA		278-½	260 (300-½)			
LNAV MDA	400-½	382 (400-½)	400-⅝	382 (400-⅝)		
CIRCLING	460-1 441 (500-1)	480-1 461 (500-1)	520-1½ 501 (600-½)	580-2 561 (600-2)		

