

NORFOLK, VIRGINIA

AL-6488 (FAA)

24025

WAAS CH <b>65922</b> <b>W23A</b>	APP CRS <b>228°</b>	Rwy Idg <b>5500</b> TDZE <b>19</b> Apt Elev <b>19</b>
--	------------------------	---

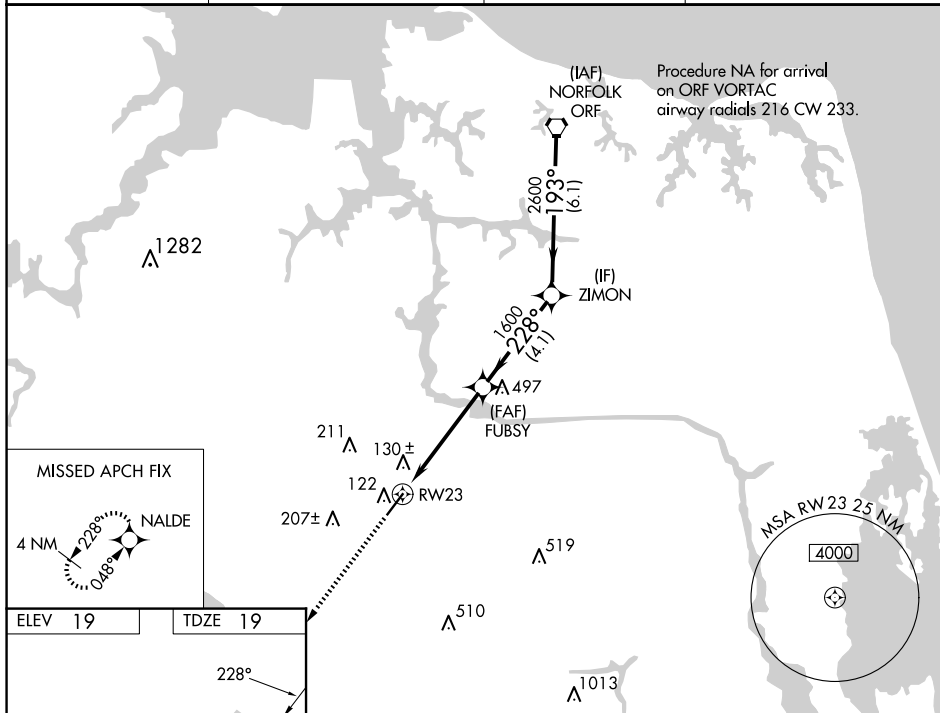
RNAV (GPS) RWY 23  
CHESAPEAKE RGNL (CPK)

RNP APCH.

**T** Rwy 23 helicopter visibility reduction below 1 SM NA. When local altimeter setting not received, use Norfolk Intl altimeter setting and increase all DA 36 feet and all MDA 40 feet. Baro-VNAV and VDP NA with Norfolk Intl altimeter setting. For uncompensated Baro-VNAV systems, LNAV/VNAV NA below -1.5°C or above 43°C.

**MISSED APPROACH:** Climb to 2000 direct NALDE and hold.

AWOS-3 <b>123.675</b>	NORFOLK APP CON <b>118.9 353.7</b>	GCO <b>135.075</b>	UNICOM <b>123.075 (CTAF) 0</b>
--------------------------	---------------------------------------	-----------------------	-----------------------------------



VGSi and RNAV glidepath not coincident (VGSi Angle 3.00/TCH 42)

ORF VORTAC

3000

GP 3.00° TCH 56

193°

228°

1600

1600

2600

FUBSY

ZIMON

RW23

\*1.3 NM to RW23

\*RNAV only

2000

NALDE

CATEGORY	A	B	C	D
LPV DA	311-1	292 (300-1)		
RNAV/VNAV DA	312-1	293 (300-1)		
RNAV MDA	480-1	461 (500-1)	480-1 $\frac{3}{8}$	461 (500-1 $\frac{3}{8}$ )

NORFOLK, VIRGINIA

Orig-B 07NOV19

36°40'N - 76°19'W

CHESAPEAKE RGNL (CPK)

RNAV (GPS) RWY 23

NE-3, 07 AUG 2025 to 04 SEP 2025

NE-3, 07 AUG 2025 to 04 SEP 2025