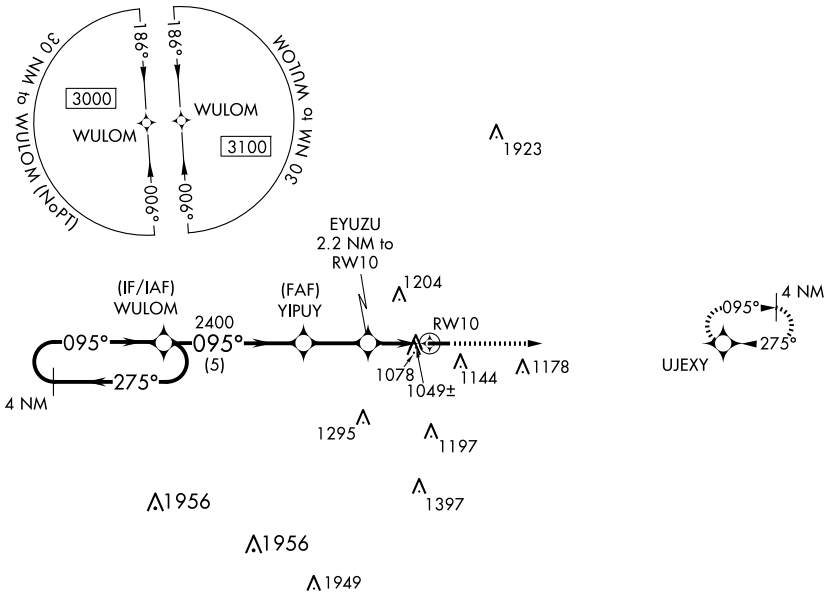


WAAS CH 61134 W10A	APP CRS 095°	Rwy Idg TDZE Apt Elev	4002 920 920
--	------------------------	-----------------------------	---

RNAV (GPS) RWY 10

MASON JEWETT FLD (TEW)

RNP APCH. ▼ Rwy 10 helicopter visibility reduction below 1 SM NA. Straight-in Rwy 10 NA at night, Circling Rwy 10 NA at night. ▲		MISSED APPROACH: Climb to 3000 direct UJEXY and hold.
AWOS-3P 119.425	GREAT LAKES APP CON ★ 118.65 226.4	UNICOM 122.7 (CTAF) 0



ELEV 920

TDZE 920

4 NM Holding Pattern

Visual Segment - Obstacles.

3000 UJEXY

3000

2400

1660

5 NM

2.3 NM

2.2 NM

4002 X 75

28

01

095° to RW10

MIRL Rwy 10-28 0

REIL Rwy 10 and 28 0

EC-1, 07 AUG 2025 to 04 SEP 2025

EC-1, 07 AUG 2025 to 04 SEP 2025