

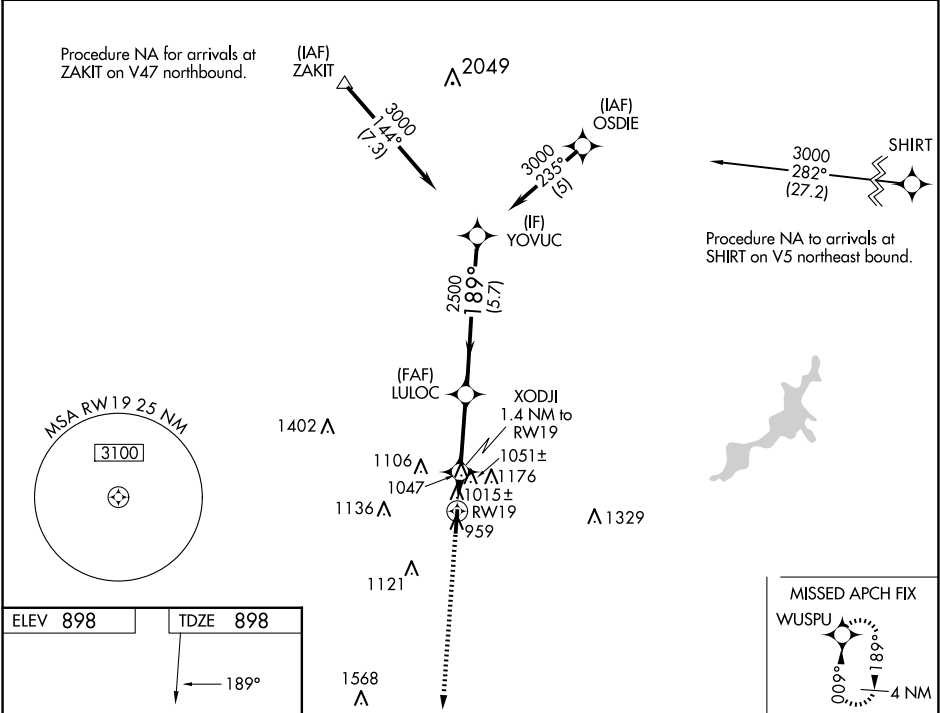
WAAS CH 87129 W19A	APP CRS 189°	Rwy Ldg TDZE 898 Apt Elev 898
--	------------------------	---

RNAV (GPS) RWY 19

WARREN COUNTY/JOHN LANE FLD (I68)

RNP APCH.	Rwy 19 helicopter visibility reduction below 1 SM NA. When local altimeter setting not received, use Dayton/Wright Brothers altimeter setting and increase all MDAs 40 feet, and LP and LNAV Cat C and D visibilities 1/8 SM and Circling Cat C visibility 1/4 SM. Straight-in Rwy 19 and Circling Rwy 19 at night, operational VGSI required, remain on or above VGSI glidepath until threshold.	MISSED APPROACH: Climb to 3000 direct WUSPU and hold.
-----------	---	--

AWOS-3PT 120.55	COLUMBUS APP CON 118.85 269.275	CLNC DEL 119.4	UNICOM 123.075 (CTAF) 0
---------------------------	---	--------------------------	-----------------------------------



3000

↑

WUSPU

✴

VGSI and RNAV glidepath not coincident

(VGSI Angle 3.50/TCH 35).

YOVUC

3000

189°

2500

LULOC

XODJI

1.4 NM to RW19

≤ 3.50°

TCH 42

1460

1.4 NM

2.8 NM

5.7 NM

CATEGORY	A	B	C	D
LP MDA	1280-1	382 (400-1)	1280-1 1/8	382 (400-1 1/8)
LNAV MDA	1320-1	422 (500-1)	1320-1 1/4	422 (500-1 1/4)
CIRCLING	1400-1 502 (600-1)	1480-1 582 (600-1)	1480-1 1/2 582 (600-1 1/2)	1480-2 582 (600-2)