

WAAS CH 45803 W19A	APP CRS 187°	Rwy Ldg 4206 TDZE 795 Apt Elev 798
--	------------------------	---

RNAV (GPS) RWY 19

SKYHAVEN (RCM)

RNP APCH - GPS.

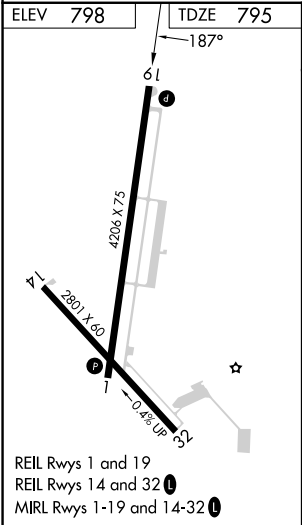
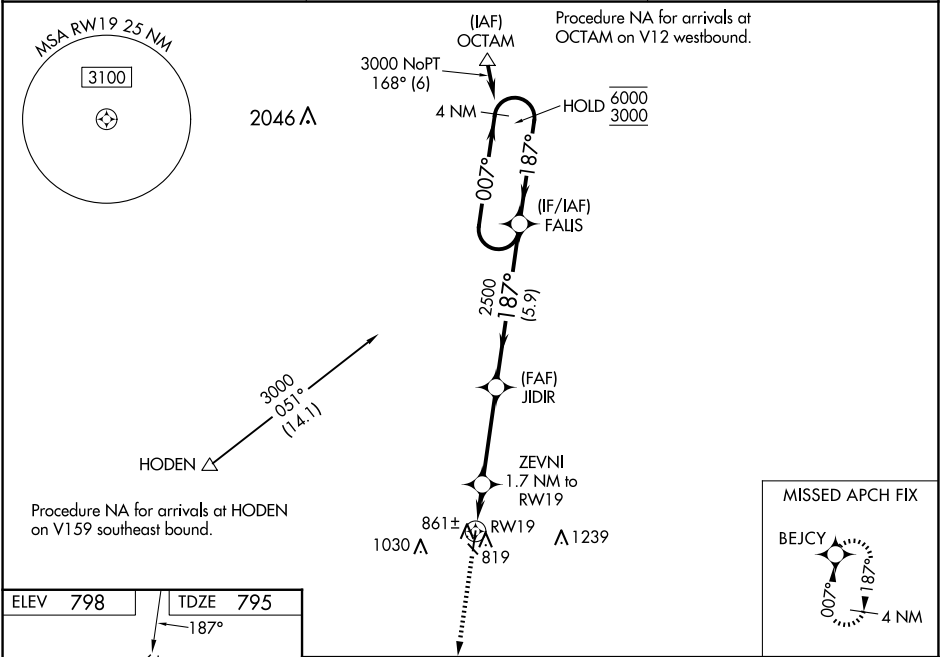
▼

▲

Baro-VNAV NA when using SZL altimeter setting. For uncompensated Baro-VNAV systems, LNAV/VNAV NA below -16°C or above 54°C. Rwy 19 helicopter visibility reduction below ¾ SM NA. When local altimeter setting not received, use SZL altimeter setting and increase LPV DA to 1084 feet; increase LNAV/VNAV DA to 1139 feet; increase all MDAs 40 feet; and Circling visibility Cat C ½ SM.

MISSED APPROACH: Climb to 3000 direct BEJCY and hold.

AWOS-3PT 119.575	WHITEMAN APP CON ★ 127.45 284.0	UNICOM 123.0 (CTAF) 0
----------------------------	---	--



3000	BEJCY	FALIS	JIDIR	ZEVNI 1.7 NM to RWY 19	RWY 19	1360	2500	187°	007°	6000	3000	4 NM Holding Pattern
↑	✦											
1.7 NM	3.5 NM	5.9 NM										
CATEGORY	A	B	C	D								
LPV DA	1045-1	250 (300-1)		NA								
LNAV/VNAV DA	1100-1	305 (400-1)		NA								
LNAV MDA	1240-1	445 (500-1)	1240-1 3/8 445 (500-1 3/8)	NA								
CIRCLING	1260-1 462 (500-1)	1340-1 542 (600-1)	1380-1 1/2 582 (600-1 1/2)	NA								

NC-3, 07 AUG 2025 to 04 SEP 2025

NC-3, 07 AUG 2025 to 04 SEP 2025