

WAAS
CH **65903**
W01A

APP CRS
007°

Rwy Ldg
TDZE **794**
Apt Elev **798**

RNAV (GPS) RWY 1
SKYHAVEN (RCM)

RNP APCH - GPS.

▼

⚠

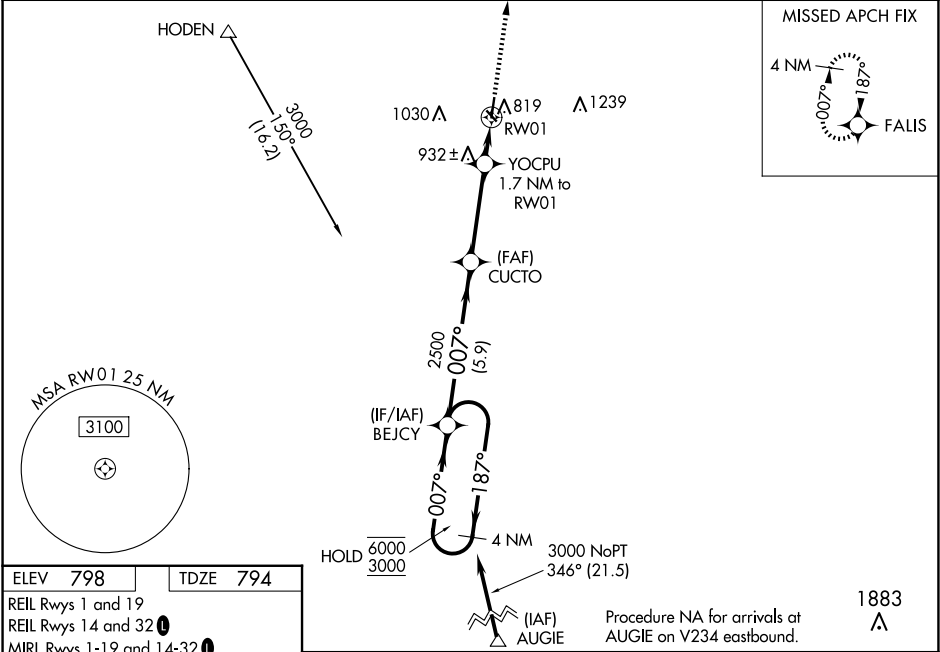
Baro-VNAV NA when using SZL altimeter setting. Rwy 1 helicopter visibility reduction below ¾ SM NA. For uncompensated Baro-VNAV systems, LNAV/VNAV NA below -16°C or above 54°C. When local altimeter setting not received, use SZL altimeter setting and increase LPV DA to 1083 feet; increase LNAV/VNAV DA to 1194 feet and all visibilities ½ SM; increase all MDAs 40 feet and LNAV visibility Cat C ½ SM, and Circling visibility Cat C ¼ SM.

MISSED APPROACH: Climb to 3000 direct FALIS and hold.

AWOS-3PT
119.575

WHITEMAN APP CON ★
127.45 284.0

UNICOM
123.0 (CTAF) **0**



ELEV **798** TDZE **794**

REIL Rwy 1 and 19
REIL Rwy 14 and 32 **0**
MIRL Rwy 1-19 and 14-32 **0**

4 NM Holding Pattern
6000 ← 187°
3000 → 007°
GP 3.00°
TCH 36

BEJCY

CUETO

YOCPU 1.7 NM to RW01

RW01

1360

5.9 NM

3.6 NM

1.7 NM

CATEGORY	A	B	C	D
LPV DA	1044-1 250 (300-1)			NA
LNAV/VNAV DA	1155-1 361 (400-1)			NA
LNAV MDA	1220-1	426 (500-1)	1220-1¼ 426 (500-1¼)	NA
CIRCLING	1260-1 462 (500-1)	1340-1 542 (600-1)	1380-1½ 582 (600-1½)	NA

NC-3, 07 AUG 2025 to 04 SEP 2025

NC-3, 07 AUG 2025 to 04 SEP 2025